

HIGHLAND PARK - 'A' HALL LOCKER REPLACEMENT

BEAVERTON, OR

BEAVERTON SCHOOL DISTRICT

OWNER

2180 SW 170TH AVE
BEAVERTON, OR, 97003
(T): (503) 356-4458
(F): (503) 356-4491
CONTACT: ALEXANDER SANTA

TBD

CONTRACTOR

STREET ADDRESS
CITY, STATE, ZIP
(T): (555) 555-5555
(F): (555) 555-5555
CONTACT: --

CCB #:-----

CIDA, INC.

ARCHITECT/ STRUCTURAL ENGINEER

15895 SW 72ND AVE, SUITE 200
PORTLAND, OREGON 97224
(T): (503) 226-1285
(F): (503) 226-1670
CONTACT: JEN HAWKINS

LEGAL DESCRIPTION

TAX LOT: 1S121BD
TAX MAP: 3550

BUILDING CODE INFORMATION

DESIGN CODE: 2019 OREGON STRUCTURAL SPECIALTY CODE (OSSC)
OCCUPANCY: F-1, S-1, B (NON-SEPARATED)
CONSTRUCTION TYPE: III-B (SPRINKLERED)
BUILDING AREA: 107,392 SF
AREA OF WORK ONLY: 3,000 SF

PROJECT DESCRIPTION

THIS PROJECT IS REPLACEMENT OF 198 FULL-SIZE METAL LOCKERS WITH NEW HALF-SIZE METAL LOCKERS TO INCREASE STUDENT'S AVAILABILITY TO LOCKERS. WE ANTICIPATE THE MAJORITY OF THE NEW LOCKERS TO BE INSTALLED AGAINST THE WALL AND BELOW A NEW SOFFIT AREA. WE ANTICIPATE UP TO TWO SETS OF 12 LOCKERS TO BE FREESTANDING.
REPLACEMENT OR ADJUSTMENTS TO THE MECHANICAL AND ELECTRICAL SYSTEMS ARE ASSUMED NOT TO BE REQUIRED.

RELEASES

COVER SHEET

- CS1 COVER SHEET
- GNI GENERAL NOTES

ARCHITECTURAL

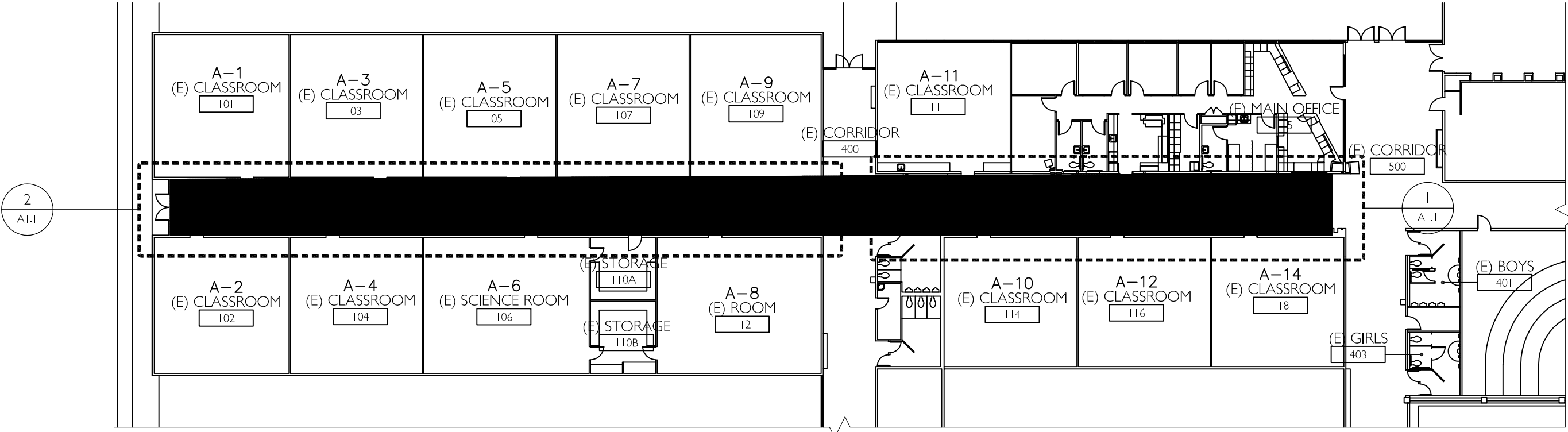
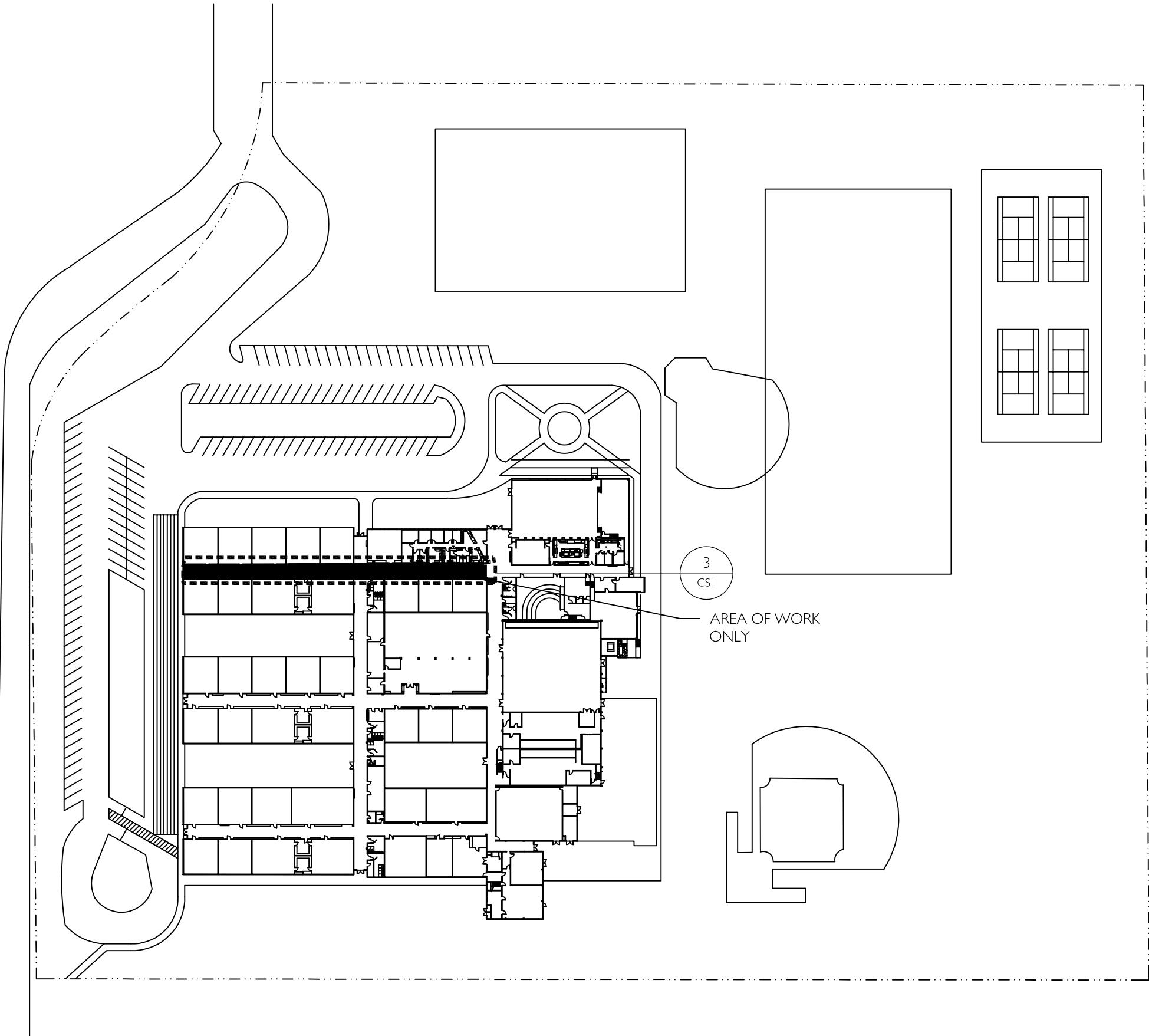
- AT.1 FLOOR PLAN & REFLECTED CEILING PLAN

STRUCTURAL

51.1



NORTH
2
VICINITY MAP
CS1 NO SCALE



NORTH
3
KEY PLAN
CS1 NO SCALE

PRELIMINARY
PLAN
ONLY-NOT
FOR
CONSTRUCTION

15895 SW 72ND AVE SUITE 200
PORTLAND, OREGON 97224
TEL: 503.226.1285
FAX: 503.226.1670
WWW.CIDAINC.COM



15895 SW 72ND AVE SUITE 200
PORTLAND, OREGON 97224
TEL: 503.226.1285
FAX: 503.226.1670
WWW.CIDAINC.COM

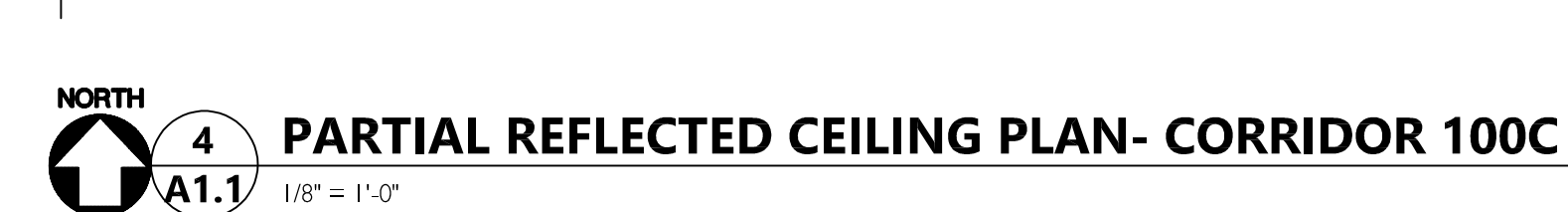
TENANT IMPROVEMENT FOR:
BSD HIGHLAND PARK MIDDLE SCHOOL
7000 SW WILSON AVE
BEAVERTON, OR 97008


COVER SHEET, PLANS, &
SECTION

CS1

JOB NO. 210036.01

© 2021 CIDA, P.C./CIDA. ALL RIGHTS RESERVED.


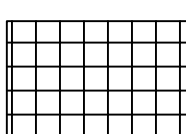

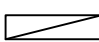


ROOM 101	ROOM NAME & NUMBER	(E)	EXISTING
=====	(E) WALL	FOF	FACE OF FINISH
	NOT IN SCOPE		

1. DEMO ALL EXISTING 72"X 12"X 1/4" D METAL LOCKERS AT CORRIDOR 100B AND 100C- BASE TO REMOVE. SALVAGE FOR REUSE BY BEAVERTON SCHOOL DISTRICT. TO BE REPLACED WITH NEW METAL LOCKERS.
2. ALL NEW METAL STUDENT LOCKERS TO BE SUPERIOR BOOKSAFE III CORRIDOR LOCKER DOUBLES (2PH) LOCKERS BY JET INDUSTRIES INC. ALL LOCKERS TO BE 12"X 14"X 72". LOCKS TO BE BUILT-IN COMBINATION LOCKS.
3. COLOR OF LOCKERS TO BE SELECTED BY BSD.
4. ALL CONDITIONS SHOWN OR IMPLIED ON THE DRAWINGS SHALL BE VERIFIED BY THE CONTRACTOR PRIOR TO CONSTRUCTION. NOTIFY AE IMMEDIATELY OF ANY DISCREPANCIES.
5. ALL DIMENSIONS ARE TO CENTERLINE OF WALLS U.N.O.
6. ALL FINISHES TO BE SELECTED/COORDINATED DIRECTLY BY BEAVERTON SCHOOL DISTRICT AND STANDARDS
7. VERIFY ALL FINISH SELECTIONS WITH TENANT AND OWNER PRIOR TO ORDER/INSTALL.
8. EXISTING WALL AND CEILING FINISHES TO REMAIN; PATCH AND REPAIR TO 'LIKE NEW' CONDITION

- | | |
|---|--|
| 1 | (N) METAL STUDENT LOCKERS, TWO TIER (36"H) WITH FLAT TOPS AT CORRIDOR 100C ONLY |
| 2 | (N) METAL STUDENT LOCKERS, TWO TIER (36"H) WITH SLOPED TOPS AT CORRIDOR 100B ONLY- INSTALL (N) LOCKER AT (E) LOCKER LOCATIONS UNLESS NOTED OTHERWISE |
| 3 | (E) FIRE EXTINGUISHER/TRASH LOCKER TO REMAIN |
| 4 | 60"X 54" DOOR CLEARANCE, 18" CLEAR ON PULL SIDE |

1. ALL SOFFITS ABOVE LOCKERS ARE TO REMAIN
2. ALL LIGHT FIXTURES AND HVAC VENTS EXISTING TO REMAIN.

ROOM 101	ROOM NAME & NUMBER
	NOT IN SCOPE
	(E) SURFACE MOUNTED ACOUSTICAL TILE TO REMAIN
	(E) GYP. BD. SOFFIT OR HEADER TO REMAIN
	(E) 1X4 SURFACE MOUNTED LIGHT FIXTURE TO REMAIN

- (E) SOFFIT ABOVE LOCKER TO REMAIN

© 2021 CIDA, P.C./CIDA. ALL RIGHTS RESERVED