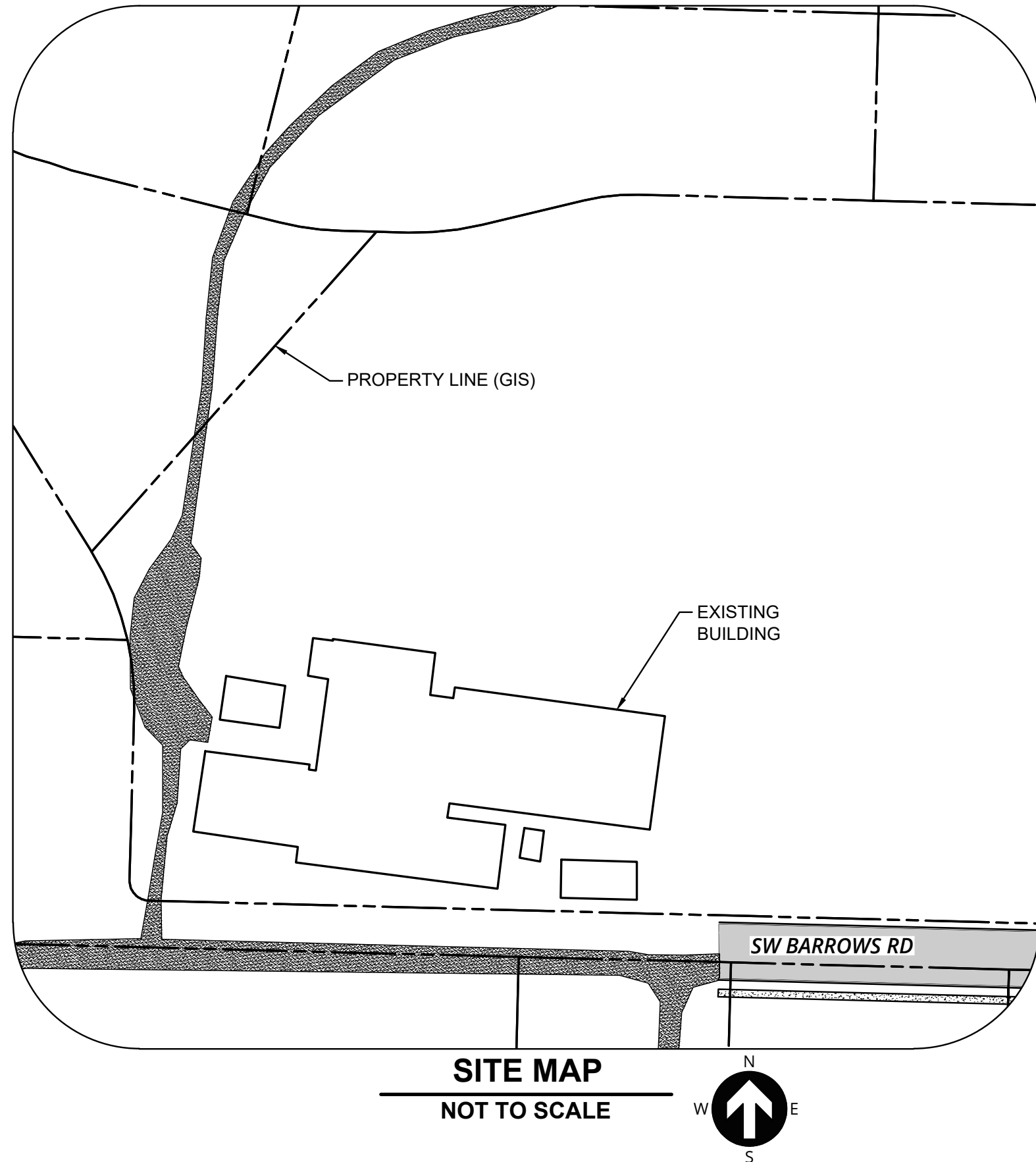
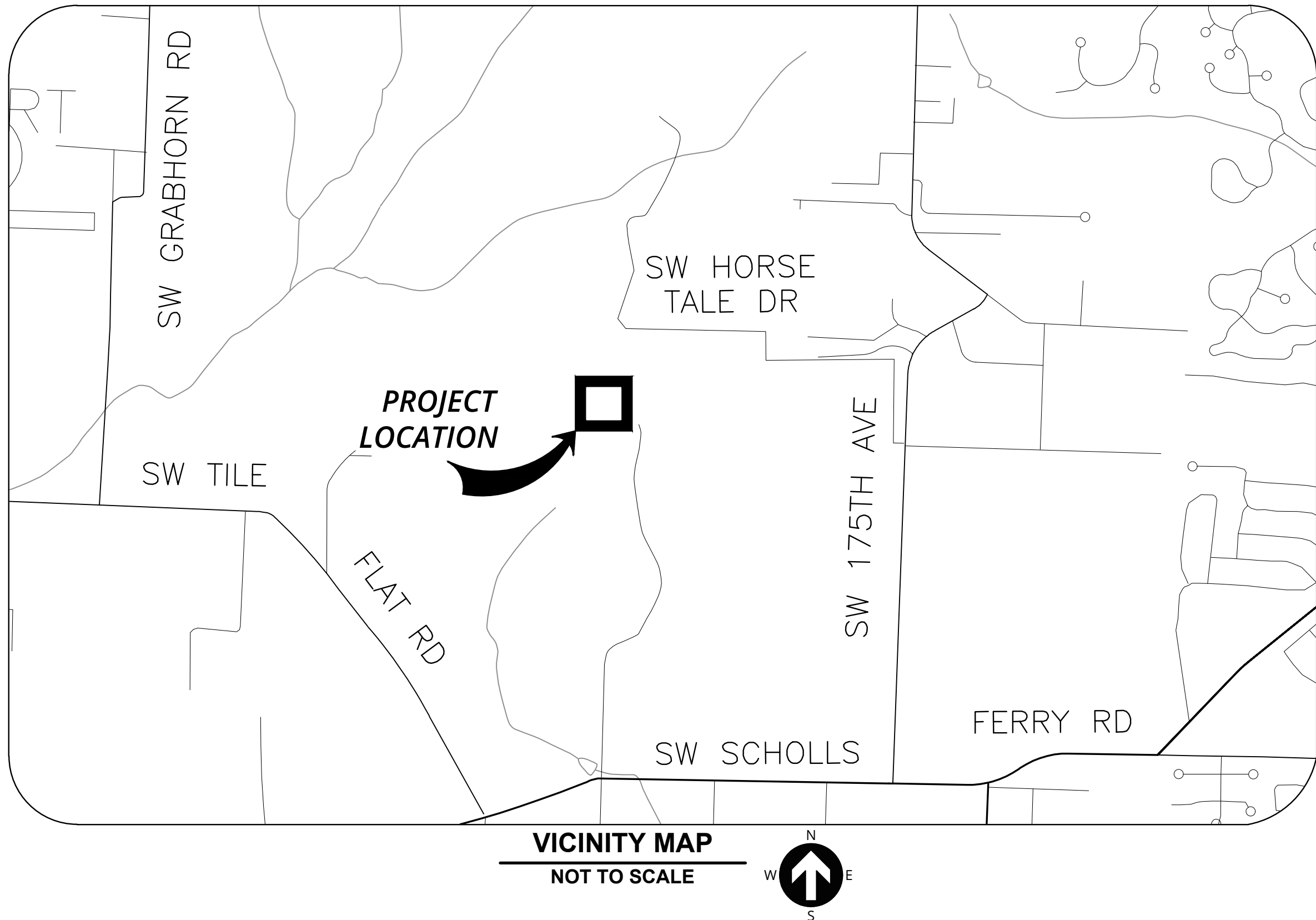


# DEMOLITION PERMIT DRAWINGS

FOR

## HORSE BARN ES DEMOLITION

PREPARED FOR  
BEAVERTON SCHOOL DISTRICT



INDEX OF SHEETS	
SHEET NO.	SHEET TITLE
C000	COVER SHEET
C100	DEMOLITION PLAN
C110	DETAILS

### SITE INFORMATION

#### SITE ADDRESS

TAX LOT #1S1310002200  
18218 SW HORSE TALE DR  
BEAVERTON, OR 97007

#### JURISDICTION

CITY OF BEAVERTON

#### FLOOD HAZARD

MAP NUMBERS: 41067C0536E  
ZONE X (UNSHADED)

#### LOCATION

SW 1/4 OF SECTION 31,  
T.1S., R.1W., W.M., WASHINGTON  
COUNTY, OR

#### HORIZONTAL DATUM (BASIS OF BEARINGS)

OREGON COORDINATE REFERENCE SYSTEM O.C.R.S. (PORTLAND ZONE),  
INTERNATIONAL FEET.

#### VERTICAL DATUM

NAVD 88.

### PROJECT TEAM

#### OWNER

BEAVERTON SCHOOL DISTRICT  
16550 SW MERLO ROAD  
BEAVERTON, OR 97003  
CONTACT: AARON BOYLE, PMP, DBIA  
PHONE: (503) 356-4364  
EMAIL: aaron\_boyle@beavertonk12.or.us

#### CIVIL ENGINEER

3J CONSULTING, INC.  
9600 SW NIMBUS AVE, SUITE 100  
BEAVERTON, OR 97008  
CONTACT: BRIAN O'ROURKE, P.E.  
PHONE: (503) 946-9365  
EMAIL: brian.ourourke@3j-consulting.com

### UTILITIES & SERVICES

#### STORM WATER

CITY OF BEAVERTON  
12725 SW MILLIKAN WAY  
BEAVERTON, OR 97005  
PHONE: (503) 526-2222

#### WATER

PRIVATE WATER WELL

#### GAS

NORTHWEST NATURAL  
NW AMBERWOOD DRIVE  
HILLSBORO, OR 97124  
PHONE: (800) 422-4102

#### SANITARY SEWER

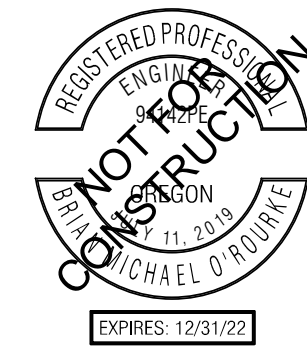
CITY OF BEAVERTON  
12725 SW MILLIKAN WAY  
BEAVERTON, OR 97005  
PHONE: (503) 526-2222

#### POWER

PORTLAND GENERAL ELECTRIC  
PHONE: (800) 743-5000

#### FIRE

TUALATIN VALLEY FIRE & RESCUE  
STATION NUMBER 69  
9940 SW 175TH AVE  
ALOHA, OR 97007  
PHONE: (503) 649-8577



PUBLISH DATE

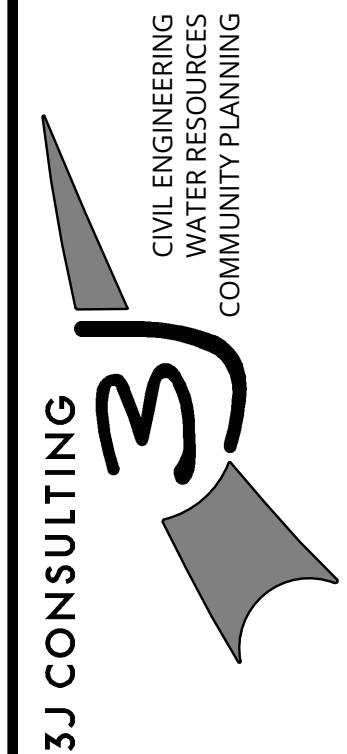
12/15/22

ISSUED FOR

PERMIT

REVISIONS

COVER SHEET  
**HORSE BARN ES DEMOLITION**  
**BEAVERTON SCHOOL DISTRICT**  
18218 SW HORSE TALE DRIVE  
BEAVERTON, OR 97007



PROJECT INFORMATION

3J PROJECT # | 22827  
TAX LOT(S) | 1S1310002200  
LAND USE # | N/A  
DESIGNED BY | KMK  
CHECKED BY | BMO

SHEET NUMBER

C000



P:122827-BSD-HORSE BARN ES DEMO CAD SHEET C100 - DEMOLITION PLAN.DWG



LEGEND

- PROPERTY LINE
- LIMITS OF DEMOLITION
- HIGH VISIBILITY FENCING
- SEDIMENT FENCING
- TREE PROTECTION FENCING
- INLET PROTECTION

DEMOLITION KEY NOTES

- DEMOLISH BUILDINGS IN ITS ENTIRETY AND DISPOSE OF OFF-SITE. REMOVE ALL BUILDING ELEMENTS, INCLUDING BUT NOT LIMITED TO ROOF, WALLS, STRUCTURE, CONCRETE SLABS, FOOTINGS AND FOUNDATIONS, AND ALL ABOVE GROUND MECHANICAL, ELECTRICAL, PLUMBING AND TECHNOLOGY UTILITIES. SEE DEMOLITION NOTE 1 FOR REMOVAL OF THE FOLLOWING HAZARDOUS MATERIALS IDENTIFIED ON-SITE.
  - WHITE WINDOW GLAZING IDENTIFIED AS ASBESTOS CONTAINING MATERIAL
  - SUSPECT PCB CONTAINING FLUORESCENT LIGHT BALLASTS
  - VARIOUS COOLERS AND REFRIGERATORS CONTAINING REFRIGERANTS
- REMOVE EXISTING ASPHALT CONCRETE, BASE ROCK, AND CURBS. DISPOSE OF RUBBLE AND REFUSE OFF-SITE.

EROSION CONTROL KEY NOTES

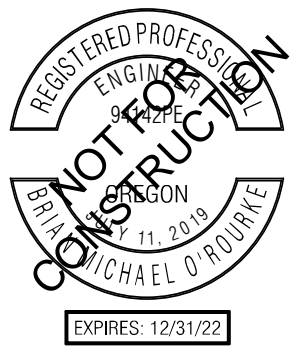
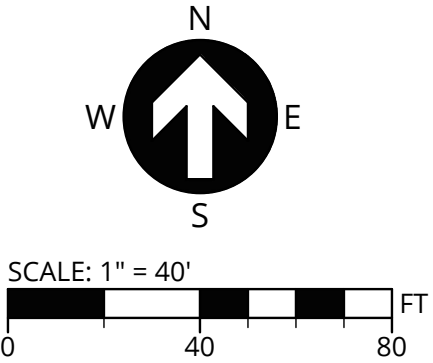
- INSTALL HIGH VISIBILITY ORANGE CONSTRUCTION FENCING.
- INSTALL TREE PROTECTION FENCING PER DETAIL ON SHEET C110. MAINTAIN THROUGHOUT CONSTRUCTION. COORDINATE WITH BEAVERTON SCHOOL DISTRICT FOR ANY ROOT AND/OR CROWN PRUNING REQUIRED FOR TEMPORARY CONSTRUCTION. SEE PROJECT SPECIFICATIONS FOR ROOT AND CROWN PRUNING REQUIREMENTS WITHIN TREE PROTECTION ZONE.
- INSTALL SEDIMENT FENCING PER DETAIL ON SHEET C110. MAINTAIN THROUGHOUT CONSTRUCTION.
- INSTALL CURB AND GUTTER INLET PROTECTION PER DETAIL ON SHEET C110. MAINTAIN THROUGHOUT CONSTRUCTION.
- USE EXISTING GRAVEL AS CONSTRUCTION ENTRANCE.

DEMOLITION NOTES

- CONTRACTOR TO REVIEW PRE-DEMOLITION HAZARDOUS MATERIALS SURVEY REPORT FOR SITE RECOMMENDATIONS PROVIDED BY TRC ENVIRONMENTAL CORPORATION, DATED NOVEMBER 23, 2022.
  - REMOVAL OF ASBESTOS-CONTAINING MATERIALS SHOULD BE PERFORMED BY A STATE OF OREGON DEPARTMENT OF ENVIRONMENTAL QUALITY LICENSED ASBESTOS ABATEMENT CONTRACTOR, AND SHOULD BE HANDLED, STORED, AND DISPOSED OF ACCORDING TO ALL LOCAL, STATE, AND FEDERAL REGULATIONS.
  - ALL MERCURY CONTAINING LIGHT BULBS, THERMOSTATS AND SWITCHES THAT ARE SCHEDULED FOR DISPOSAL SHOULD BE MANAGED ACCORDING TO APPLICABLE LOCAL, STATE AND FEDERAL WASTE DISPOSAL REGULATIONS AND REQUIREMENTS.
  - ALL REFRIGERANT CONTAINING ITEMS SHOULD BE RECYCLED OR DISPOSED OF IN ACCORDANCE WITH ALL APPLICABLE FEDERAL, STATE AND LOCAL WASTE DISPOSAL REGULATIONS AND REQUIREMENTS.
- REMOVE MATERIALS AND EQUIPMENT TO BE REINSTALLED OR RETAINED IN A MANNER TO PREVENT DAMAGE. STORE AND PROTECT.
- DISCONNECT ALL ELECTRICAL, TELECOMMUNICATIONS, GAS, AND WATER SERVICES. COORDINATE DEMOLITION, PROTECTION, AND TEMPORARY SERVICES DURING CONSTRUCTION WITH UTILITY PROVIDERS.
- REMOVE ALL SURFACE IMPROVEMENTS WITHIN LIMITS OF DEMOLITION UNLESS OTHERWISE NOTED, INCLUDING CLEARING EXISTING VEGETATION (NOT TREES) WITHIN THE DEMOLITION LIMITS.
- PROTECT ALL UNDERGROUND UTILITIES UNLESS OTHERWISE NOTED.

EXISTING CONDITIONS PLAN

THIS PLAN HAS BEEN PREPARED FOR ILLUSTRATIVE PURPOSES ONLY. SITE BACKGROUND INFORMATION AND FEATURES HAVE BEEN GENERATED FROM A COMBINATION OF PUBLIC GIS DATA SOURCES, AERIAL PHOTOS, AND PHYSICAL SITE OBSERVATIONS. NO WARRANTY OR GUARANTEE IS EXPRESSED OR IMPLIED.



PUBLISH DATE

12/15/22

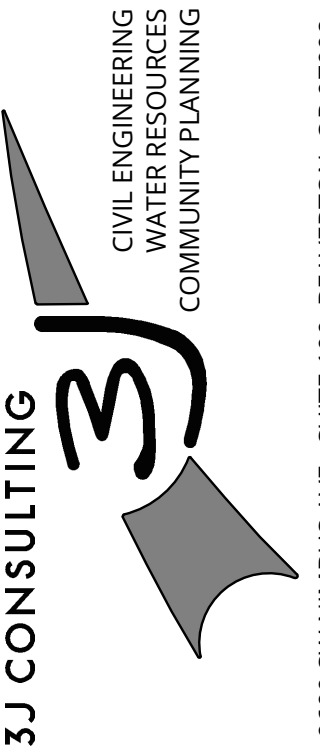
ISSUED FOR

PERMIT

REVISIONS

DEMOLITION PLAN  
HORSE BARN ES DEMOLITION  
BEAVERTON SCHOOL DISTRICT

18218 SW HORSE TALE DRIVE  
BEAVERTON, OR 97007



PROJECT INFORMATION

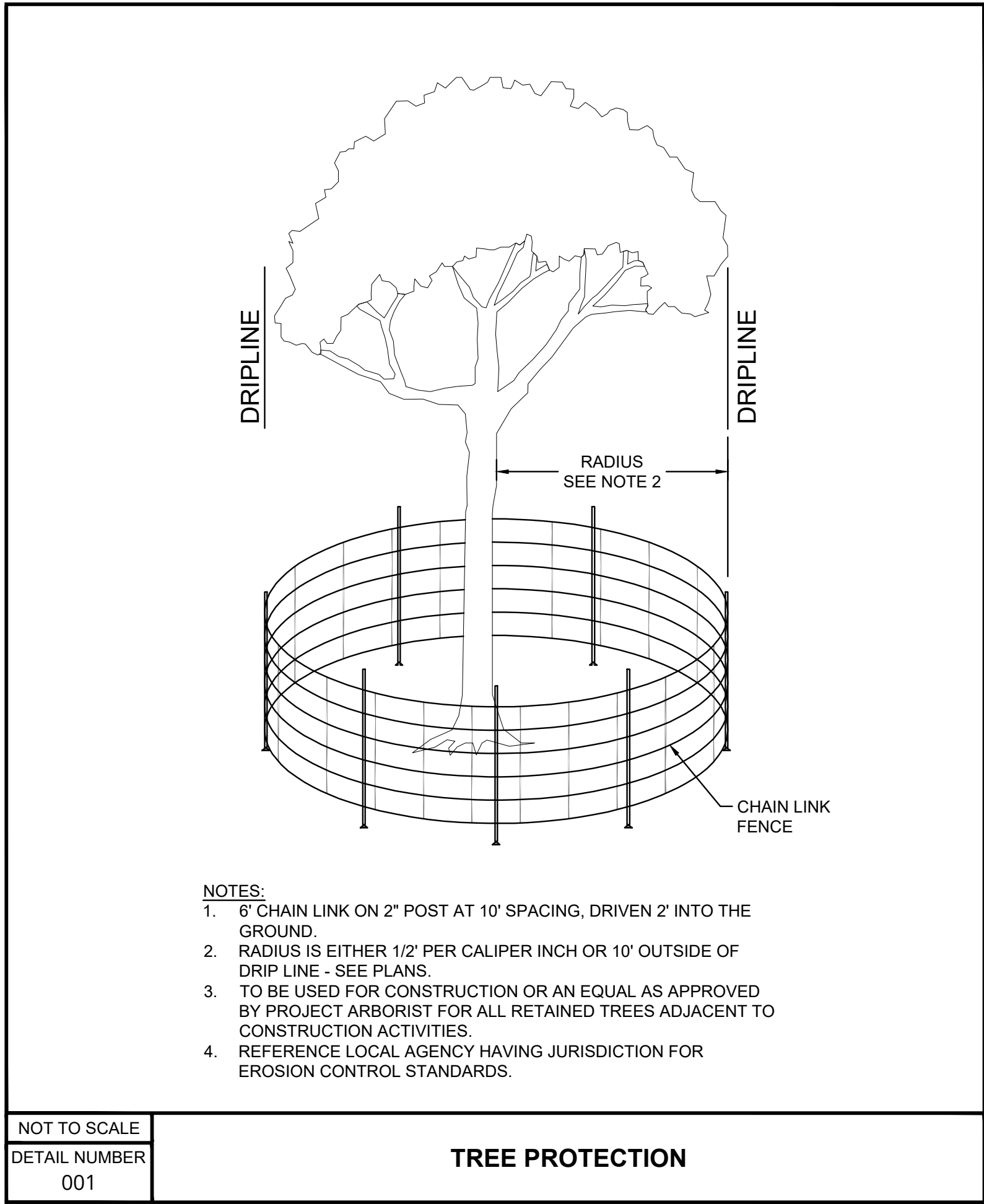
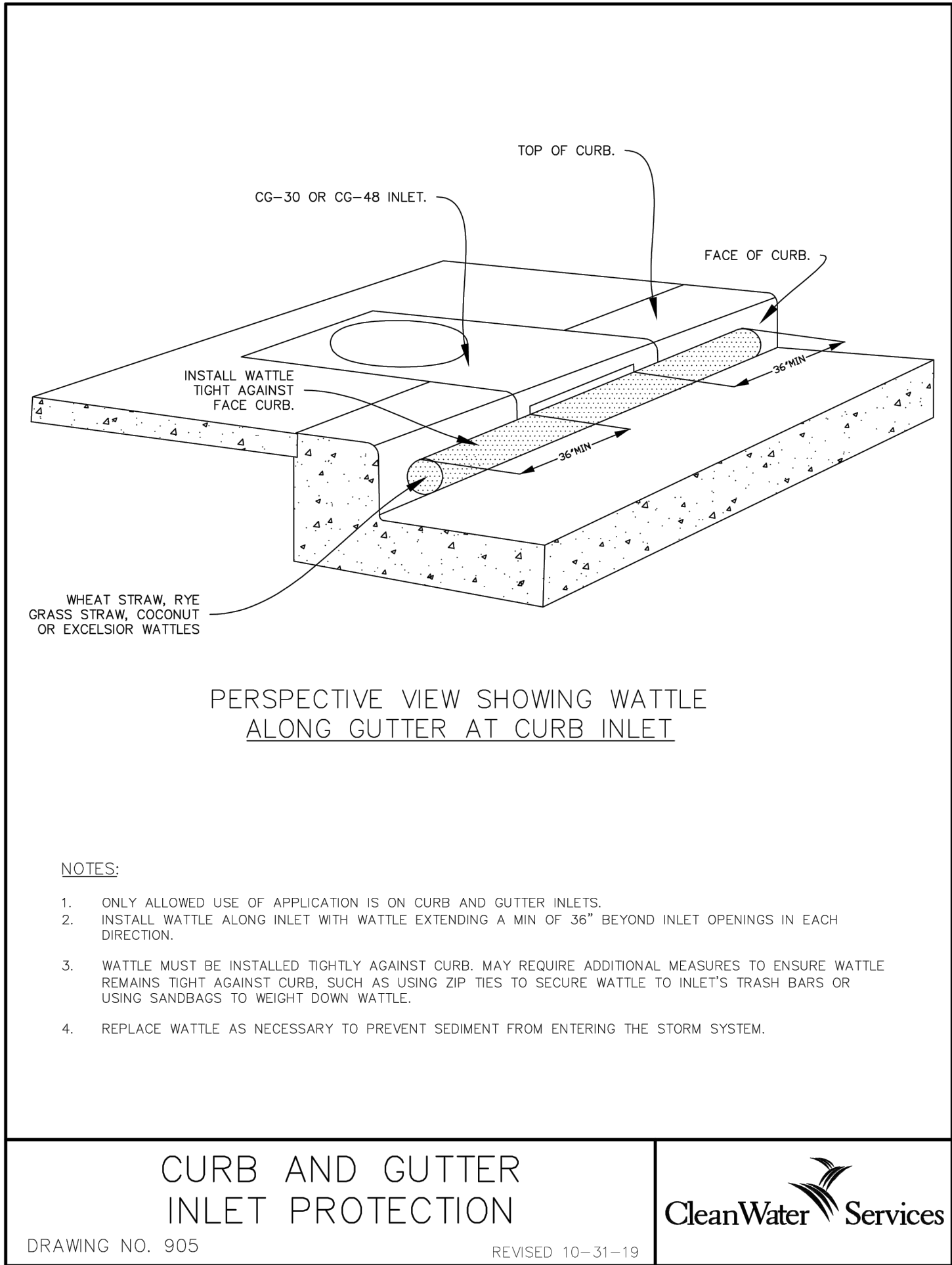
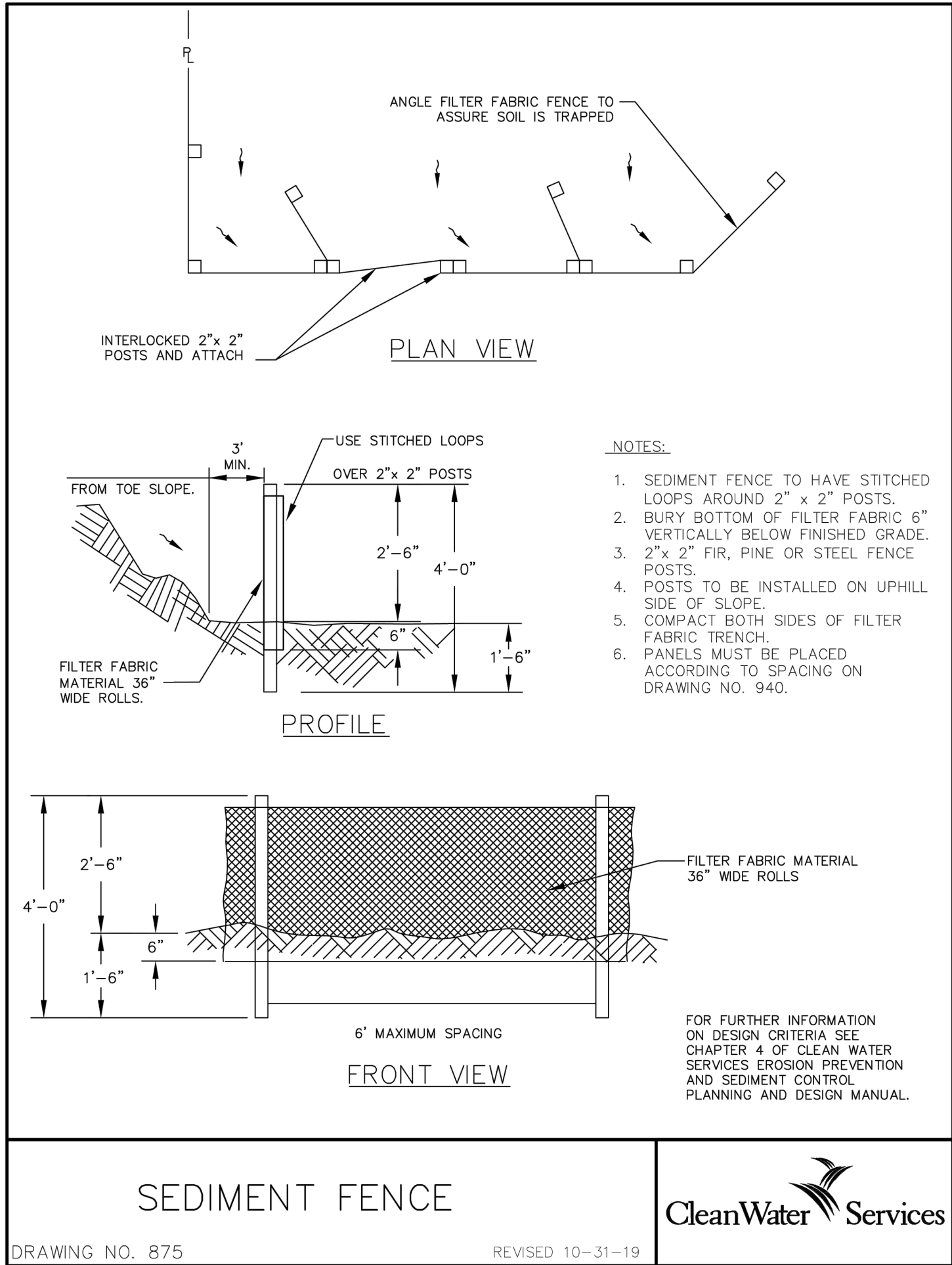
3J PROJECT # | 22827  
TAX LOT(S) | 1S1310002200  
LAND USE # | N/A  
DESIGNED BY | KMK  
CHECKED BY | BMO

SHEET NUMBER

C100



P:\22827-BSD-HORSE BARN ES DEMO\CAD\SHEETSC110 - DETAILS.DWG



PUBLISH DATE  
**12/15/22**

ISSUED FOR  
**PERMIT**

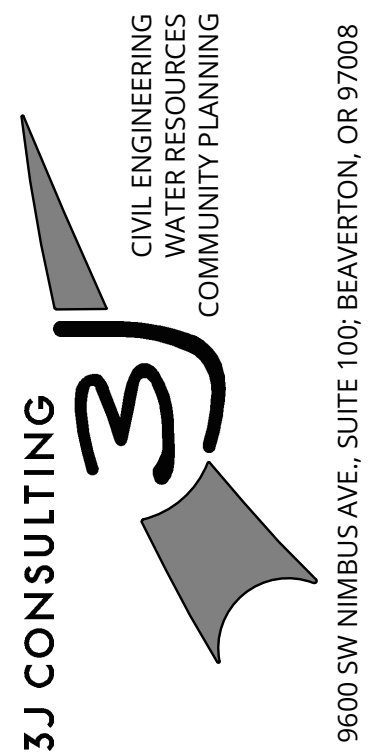
REVISIONS

**DETAILS**

**HORSE BARN ES DEMOLITION**

**BEAVERTON SCHOOL DISTRICT**

18218 SW HORSE TALE DRIVE  
BEAVERTON, OR 97007



**PROJECT INFORMATION**

3J PROJECT # | 22827  
TAX LOT(S) | 1S1310002200  
LAND USE # | N/A  
DESIGNED BY | KMK  
CHECKED BY | BMO

**SHEET NUMBER**

**C110**