



# Greenway Elementary

## Safe Routes to School Action Plan



# Safe Routes to School Action Plan

## Table of Contents

<b>Introduction.....</b>	<b>3</b>
What is Safe Routes to School .....	3
School Information .....	4
The Project Team .....	4
<b>Existing Conditions.....</b>	<b>4</b>
School Attendance Area .....	5
District Transportation Policy.....	5
School Supplemental Transportation Area.....	6
Walk and Bike Audit Evaluation .....	6
Active Transportation Support .....	7
Arrival/ Departure Procedure .....	8
<b>Evaluation and Data .....</b>	<b>10</b>
Student Travel Data.....	10
Parent Survey Data.....	12
<b>Recommendations and Plan Implementation.....</b>	<b>13</b>
Possible Infrastructure Options.....	13
Possible Programmatic Options .....	14
Prioritization .....	15
Year Time-line.....	15
<b>Final Thoughts .....</b>	<b>16</b>

## Introduction

### ***WHAT IS SAFE ROUTES TO SCHOOL***

Safe Routes to School (SRTS) is all about creating safe, convenient, and fun opportunities for children to bicycle and walk to and from schools. This is important for the health and safety of our kids and to foster livable, vibrant communities. SRTS programs increase physical activity and improve unsafe walking and bicycling conditions on routes to and from school and throughout the community.

The majority of students attending Beaverton School District (BSD) schools are either within a safe walk/bike zone or are offered bus service. BSD's SRTS Program encourages students to walk and bike to school where it's possible and take the bus provided by the school district when it's not.

### **Why is SRTS Needed?**

A generation and a half ago, nationally, over 50% of students walked or biked to school; now only 13% of students use active transportation to get to school. Since the mid 1970s the number of children who are overweight has roughly tripled from 7% to almost 20%. Health concerns related to sedentary lifestyles, including diabetes, high blood pressure and cardiovascular disease, have become the focus of statewide and national efforts to reduce health risks associated with being overweight.

Beaverton School District would like to be part of the solution. SRTS Coordinator is working with each school to develop a comprehensive SRTS Action Plan. Integrated into each plan are the "Six E's":

**Education** – Students learn lifelong safety behaviors and skills, while parents can learn about the benefits of active transportation and safe travel for students to school.

**Encouragement** – Parents and students are invited to engage in biking and walking events and activities that promote healthy and active transportation options.

**Enforcement** – Promote safe walking and biking through consistent enforcement of traffic laws around and on the routes to schools.

**Engineering** – Implement engineering changes such as new sidewalks, improved crossings, and other traffic calming measures to enhance safety of the walk or bike to school.

**Evaluation** – Assess the neighborhood travel routes, and drop-off and pick-up processes at the school; as well as evaluate the success of the SRTS Program as a whole throughout the district.

**Equity** – Reduce health and wealth disparities by providing equitable services in all school communities.

## ***SCHOOL INFORMATION***

**School Name:** Greenway Elementary School  
[www.beaverton.k12.or.us/schools/fir-grove](http://www.beaverton.k12.or.us/schools/fir-grove)

**Address:** 9150 SW Downing Drive, Portland, OR 97008

**County:** Washington

**School District:** Beaverton School District  
[www.beaverton.k12.or.us](http://www.beaverton.k12.or.us)

**Enrollment:** 487

**Enrollment by Grade:** K= 75, 15%; gr1= 84, 17%; gr2= 75, 15%; gr3= 85, 17%;, gr4= 79, 16%; Gr5= 89, 18%

**Action Plan Contact:** Lynne Mutrie, [lynne\\_mutrie@beaverton.k12.or.us](mailto:lynne_mutrie@beaverton.k12.or.us), 503-329-6469

## ***THE PROJECT TEAM***

**School Principal:** Jennifer Bailey

**Parent/ Staff Representatives:** Ed Henson, Becky Gross

**Sheriff's Office/ School Resource Officer:** Sgt. Kevin McDonald

**County Staff Representative:** Luke Pelz

**Neighborhood Association Representative:** Greenway Neighborhood Association,  
South Beaverton NAC- Ed Henson,

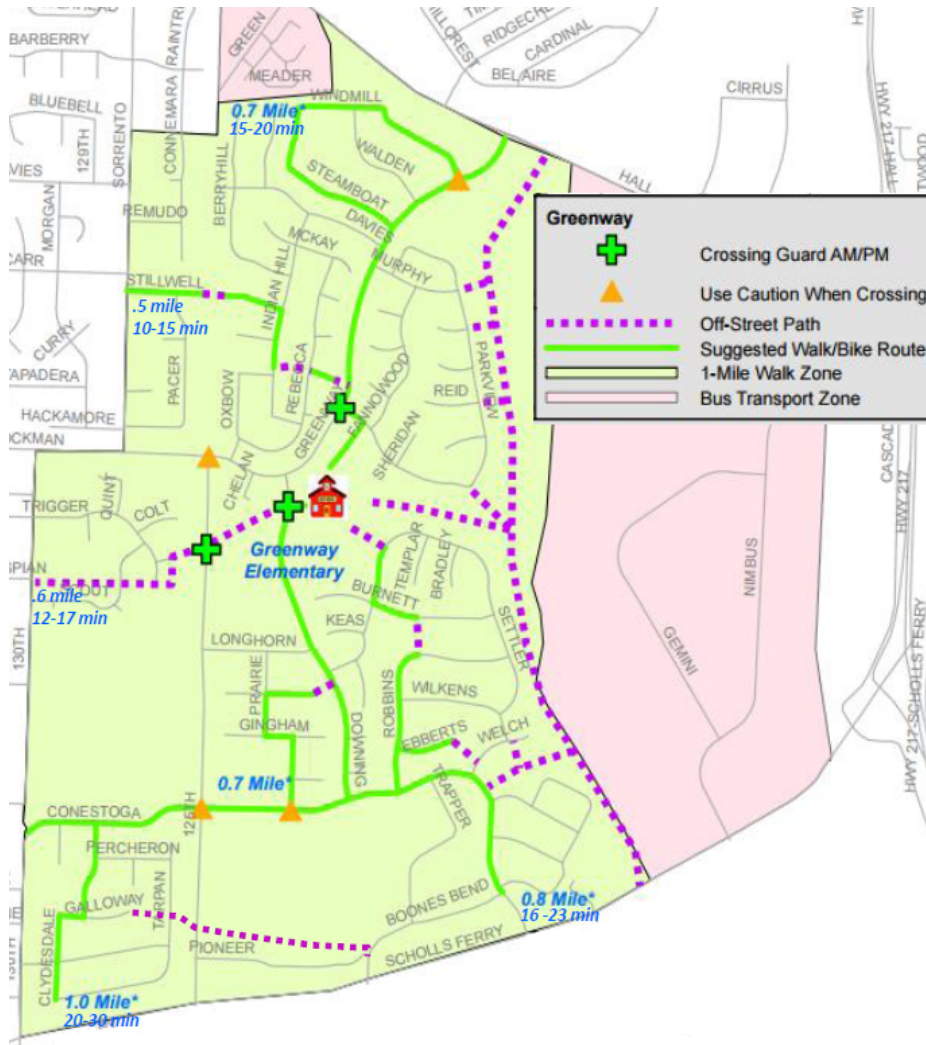
**School District Representative:** Kevin Sutherland

**BSD Safe Routes to School Coordinator:** Lynne Mutrie



## Existing Conditions

### School Attendance Area



Greenway Elementary is in Beaverton's Greenway Neighborhood where the majority of students are in the walk zone.

The attendance area is basically framed by Hall Blvd., Hwy 217 and Scholls Ferry. Most roads within the walk zone have sidewalks and low speed. There are also several paths leading to the school.

The greatest percentage of students are from the area south of the school.

### Map Disclaimer

Beaverton School District (BSD) strongly encourages parents, caregivers to use this map to find a good route from your home to school. However, new hazards or conditions may arise; parents and children should exercise common sense when using these maps and the recommended routes. In general we recommend that you budget 20-30 minutes for each mile of walking. Time needed may vary depending on traffic and/or terrain. We also suggest that parents/ caregivers travel the route initially to explore the best route and the safety skills needed to be used on the route. The BSD does not maintain or supervise the routes provided in the map, and is not responsible for students when they are walking or biking to or from school. If you see problems along identified "suggested routes" please contact BSD Public Safety at [bsd\\_public\\_safety@beaverton.k12.or.us](mailto:bsd_public_safety@beaverton.k12.or.us).

## ***District Transportation Policy***

Walking and biking is the preferred method for students traveling to and from school if students live within one mile from the school property. For those living beyond one mile, busing is the preferred mode.

Students are eligible to ride if they meet one or more of the following criteria:

- They are a primary student who resides more than one mile from school.
- They are a primary student who resides less than one mile from the school, but within a hazardous area, that has been approved by the State Board of Education and the Beaverton School District School Board for Transportation
- They are a middle or secondary student who resides more than one and one half miles from school
- They are a middle or secondary student who resides less than 1 ½ mile from the school, but within a hazardous area, that has been approved by the State Board of Education and the Beaverton School District School Board for Transportation.

## ***School Supplemental Transportation Area***

Greenway Elementary is a walking school and has no supplemental plans in effect. Bus service is only available upon special arrangement with the school district.

## ***Walk and Bike Audit Evaluation***

There are marked crosswalks with crossing guards on SW Downing and SW 125<sup>th</sup> at the trail and Parkview Loop and SW Greenway. Students come from all directions, some through the park to the east and many crossing at the intersection in front of school. Most roads in the walk area are calm with low traffic counts and speeds, though Greenway, 125<sup>th</sup> and Downing are busier arterial or collector roads.

The School Team identified the need for education of preferred routes for maximum safety. Several students cross Downing at Longhorn where several parents travel via car to reach school providing conflict. They also wanted to explore coordination of guards for Greenway and Conestoga Middle School to extend the distance and time for safe comfortable crossing particularly at Conestoga and 125<sup>th</sup>, Conestoga and Lookout Terrace; and Brockman and 125<sup>th</sup>.

A large number of Greenway students use scooters to get to school. With no secure, outdoor scooter parking available, indoor storage (foyer) was temporarily granted. The number of scooters needing to be stored soon became a space and fire hazard. The school team started researching the costs and functionality of the racks. With costs prohibitively high, a local Cub Scout student decided to make scooter racks their community project. With \$400 from PTO, a couple of days of research and a day of construction, Greenway now has a scooter rack! More, plus staple covered bike rack needed.

## ***Active Transportation Support***

Greenway has promoted Walk+Bike to School day for the past two years and started promoting May's Bike to School Day in 2016. The school team would like to examine remote meeting points to travel to school as a group.

The school community is very active and parents favor more opportunities to walk and bike to school. They know that with more people walking and biking, the neighborhood and the commute to school is safer for everyone!

Beaverton School District and many of the school's staff and parents know that students who are active while getting to school arrive better prepared to learn and are more likely to get the CDC's recommended 60 minutes of daily exercise. Increased walking and biking in and around the school neighborhood also helps reduce pollution and congestion for students and staff and teaches safe, healthy and active skills that can last a lifetime.



## ***Arrival/ Departure Procedure***

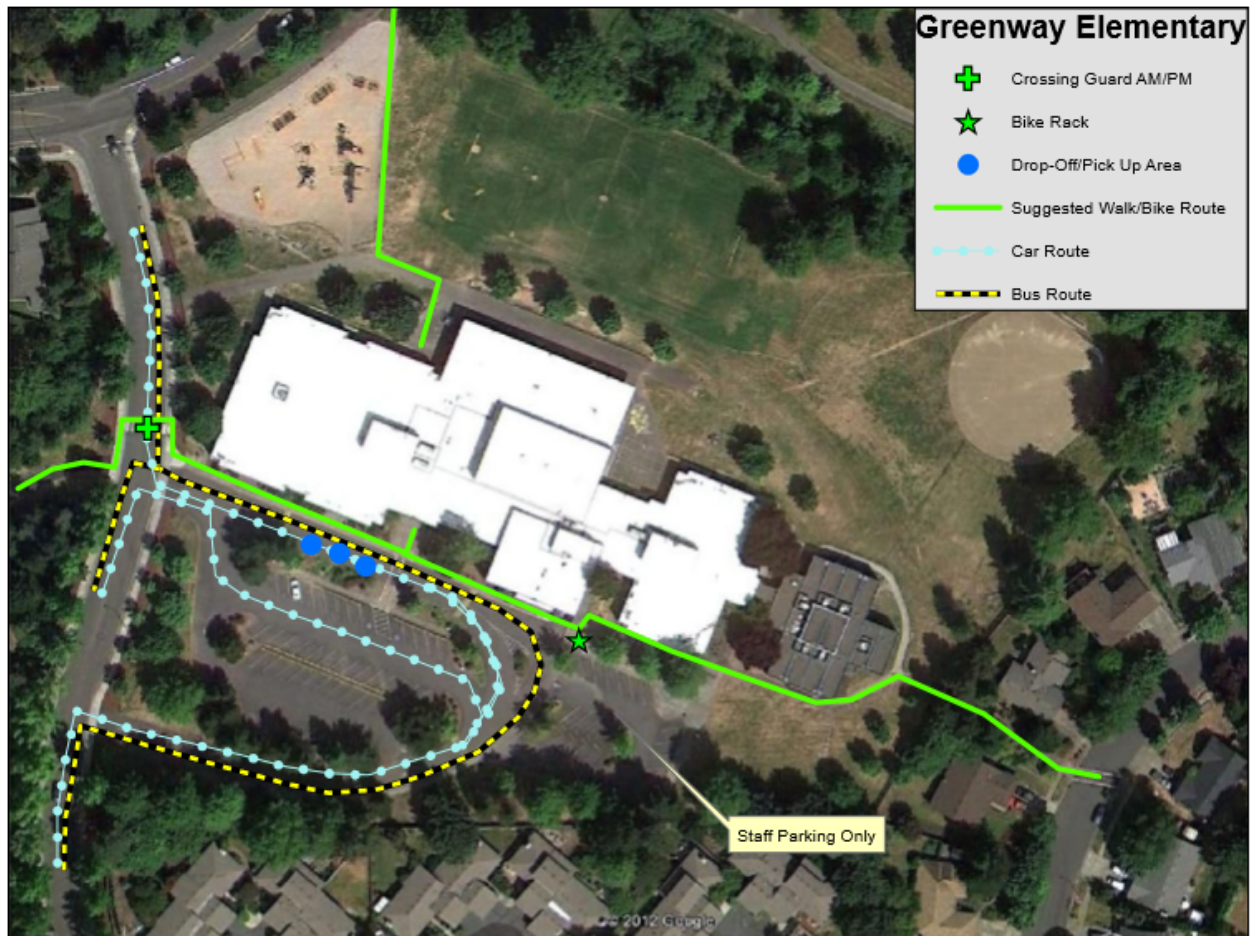
According to Fall 2015 Student Travel Mode Surveys, 56% of students were driven to school in the morning and 50% of students are driven home from school in the afternoon. Most of Greenway's students are either within the designated walk/ bike area or have bus service provided.

The one parking lot serves the Special Needs buses, those riding bikes and walking; and, staff and parents driving. With at least 50% of parents driving, the extra 180 vehicles on the local streets and negotiating Greenway's parking lot make travel to and from school and throughout the neighborhood challenging. The parking lot is adequate for the staff size and typical visitor needs, but the volume of vehicles and those who park in handicapped spots and stop in other restricted areas hinder the flow of both cars and buses.

Drivers who drop off or pick up their students off school grounds are reminded that children must exit towards the sidewalks or edge of road and if needing to cross, walk to a designated crossing to ensure safety. Please respect personal property. Parents are also reminded that u-turns, double parking and blocking crosswalks and intersections is illegal and creates a dangerous situation for others.



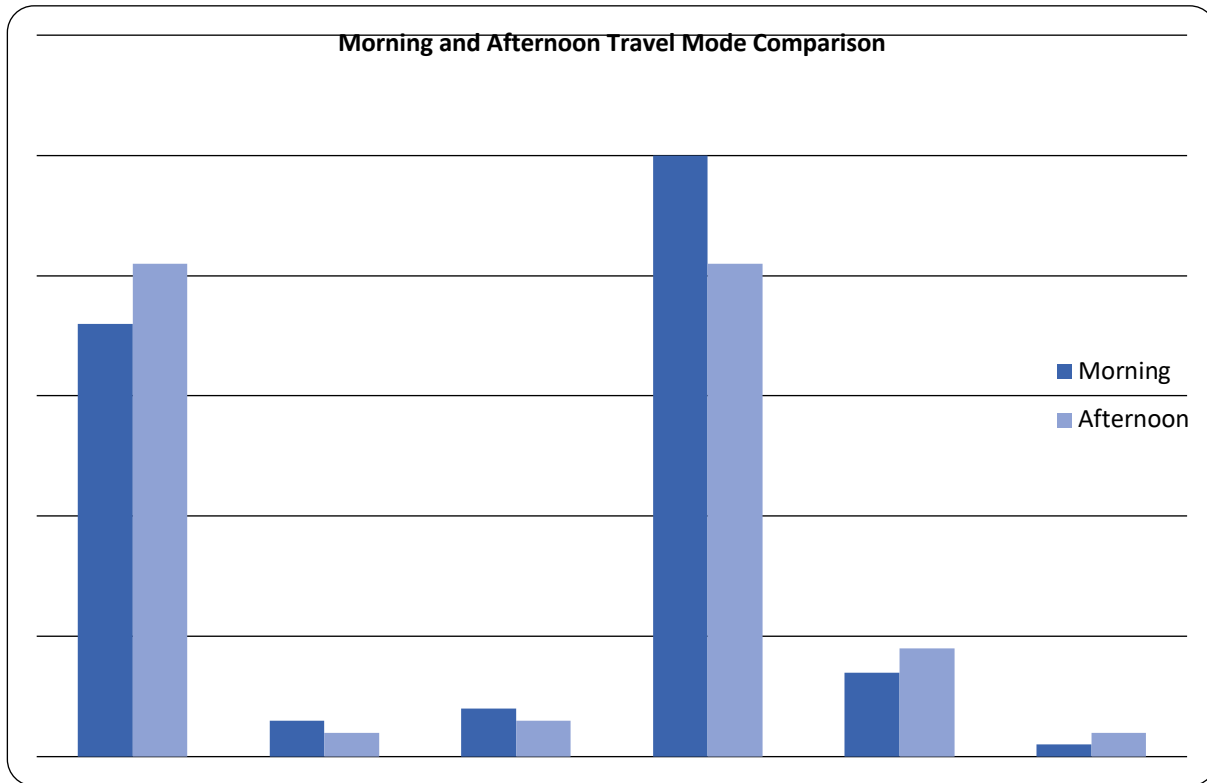


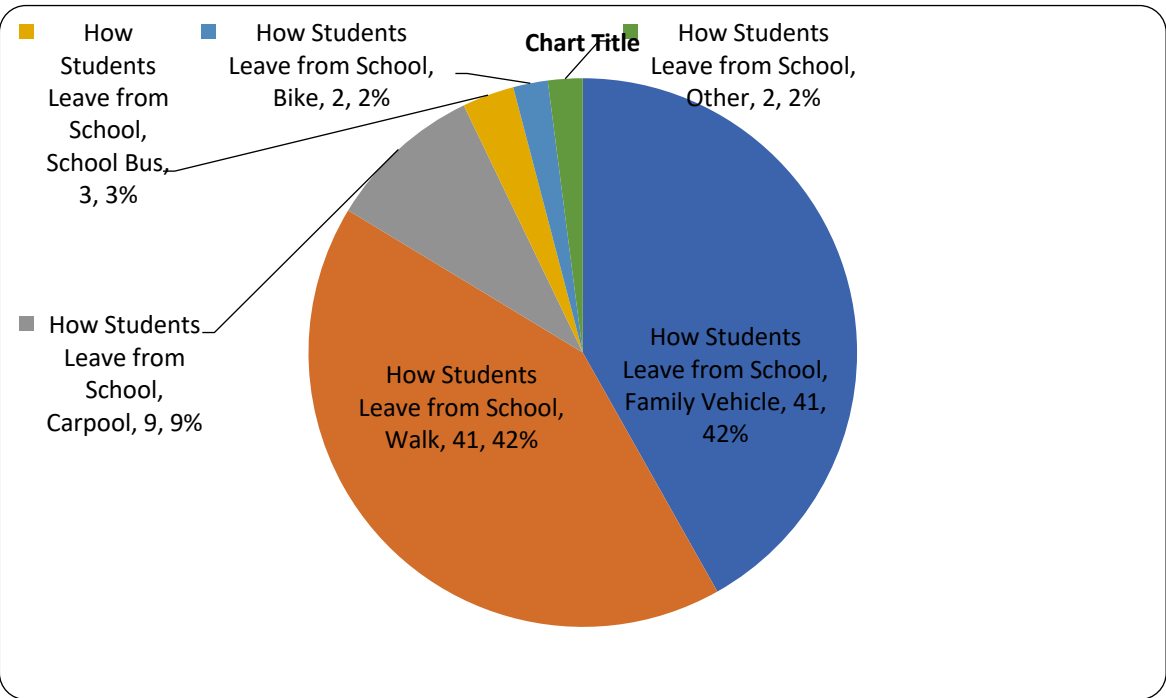
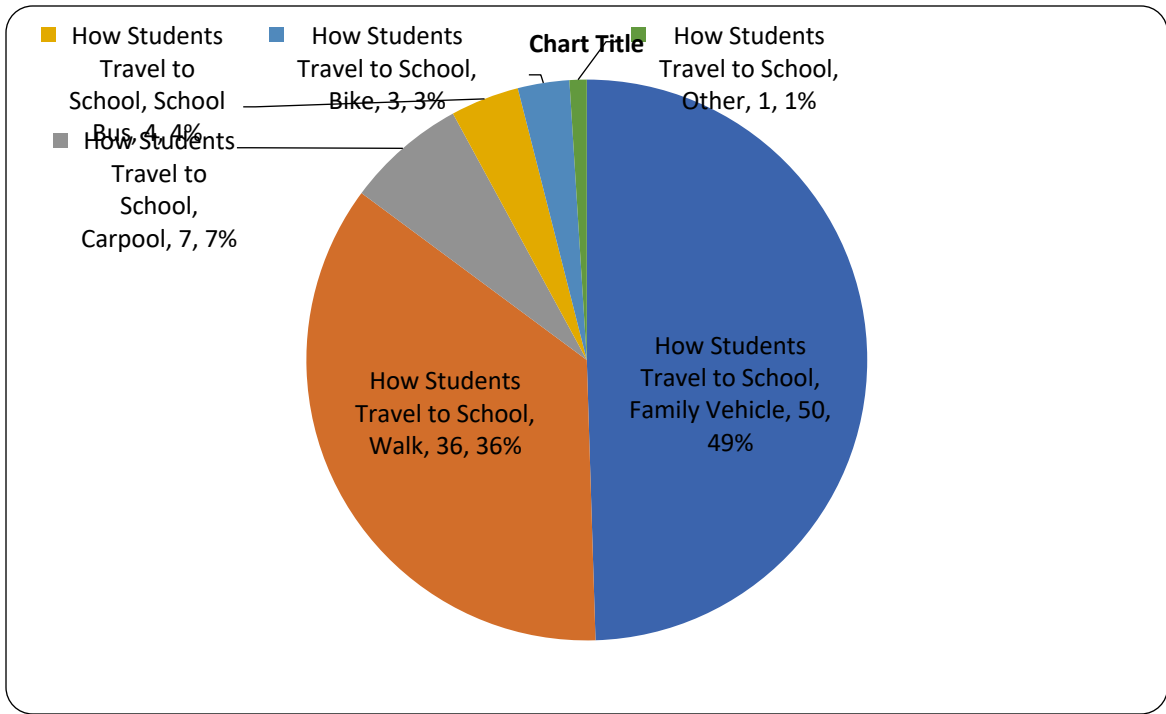


## Evaluation and Data

### *Student Travel Data- May 2016*

We conducted In-Class Student Tallies and this is how our students travel to and from school.

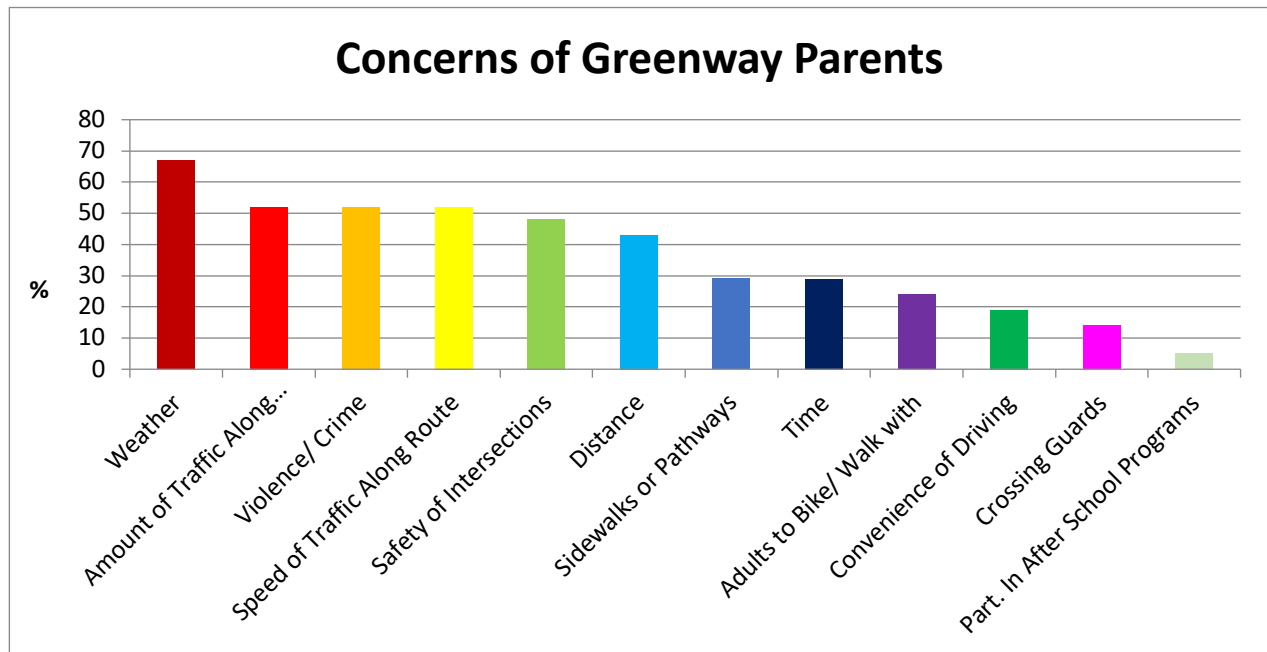






### Parent Survey Data

We conducted a Parent Survey to gather information about how students get to and from school and learn about concerns and issues surrounding the walk or bike to school.



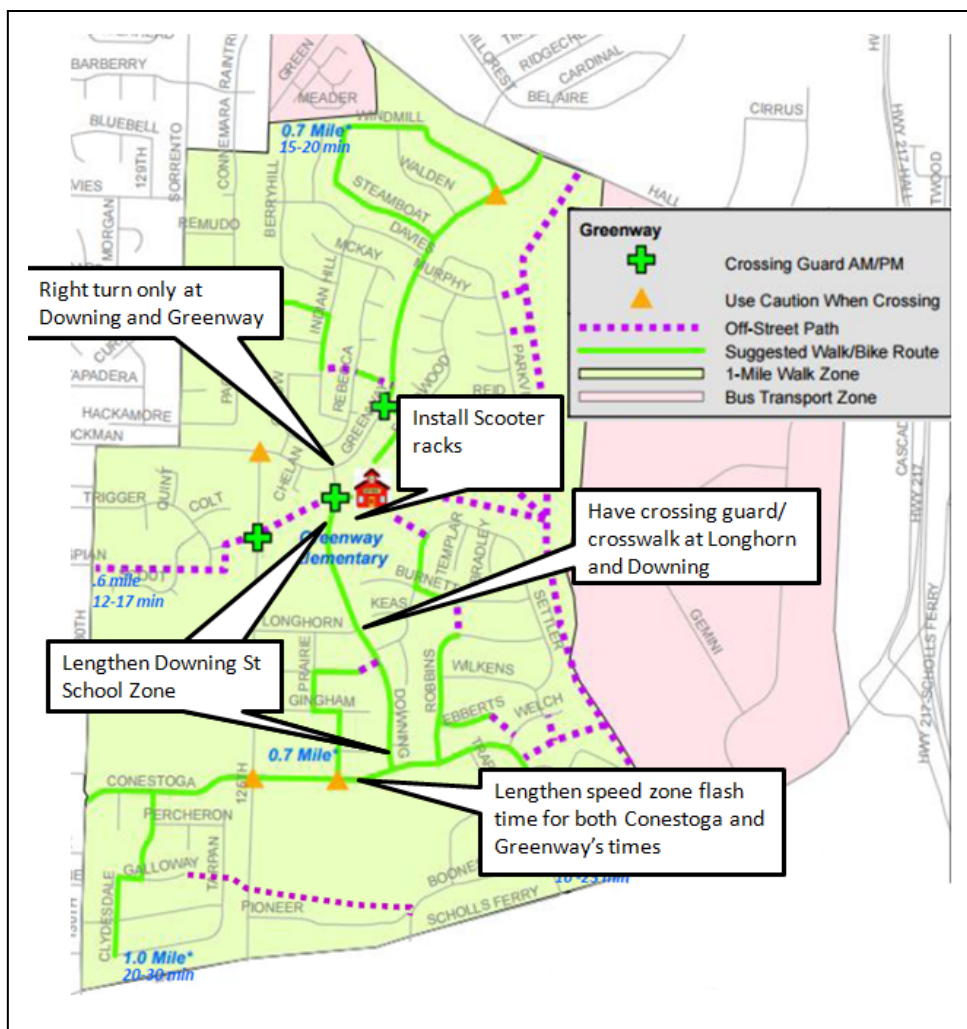
## Recommendations and Plan Implementation



### Infrastructure Options

- Have school zone lights stay on for Greenway and Conestoga times.
- Lengthen Downing St and Conestoga School zones.
- Have Right-Turn Only at Downing and Greenway.
- Post and sign for efficient arrival/ departure procedures.

*Please note, all infrastructure and enforcement projects are coordinated through the Washington County.*



## Programmatic Options

### Education

- Introduce, inform and promote SRTS program to students, staff and community.
- Distribute basic Pedestrian and Biking safety information at back to school and after spring break.
- Distribute a safer routes map with above.
- Back to School packet will include info and outreach to identify parents who are interested to lead walking school buses.
- School team to develop guidelines for drop off pick up for Back to School packet/web site.

### Encouragement

- Encourage students, staff and community to try walking or biking to school with first Walk to School Day each year.
- Walk+Bike Challenge Month.
- Regular SRTS safety tips and updates in monthly school newsletter.

### Evaluation

- Parent survey in May 2017.
- Hand raise survey in May 2017.

### Enforcement

- Traffic reduction: examine and enforce rules at school level with encouragement and reinforcement in Back to School packet, educate for safety.
- Parking, drop-off procedure enforcement.
- Downing s. of school entrance- no U-Turn and intersection stopping distance enforcement.
- Crossing guard at Downing and Longhorn.

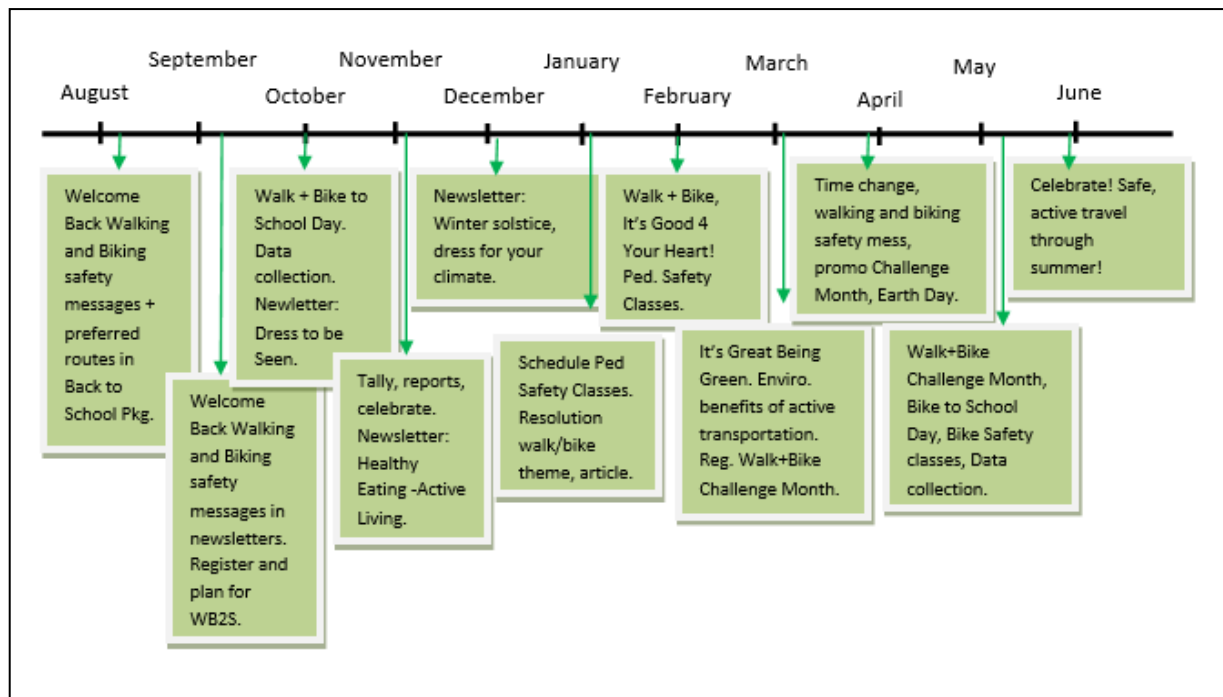
**Note:** enforcement requests are best made [here](#).



## Prioritization

1. Identify & review with school team, safer walk routes to school and create a school map to be sent out and posted on web site (Summer 2016).
2. Identify & review with school team drop off/ pick up safety procedures in coordination with BSD safety/transportation and risk/mgt- (Summer 2016) post on web site.
3. Regular SRTS Pedestrian and Bike safety tips placed in monthly school newsletters.
4. Establish Walking School Bus route with leaders. Regular Encouragement events.
5. Educate & Introduce parents: introduction to SRTS program, safety information regarding walking/biking options, including health benefits Sept PTO meeting and ongoing.
6. Determine two walking school bus routes and promote to help address parent safety concerns- Sept 2016 & ongoing.
7. List and prioritize infrastructure improvements, send to BSD and City of Beaverton.

## Year Time-line



## Final Thoughts

Thank you for your interest in making the trips to school safe, healthy and fun! This Action Plan is to be updated annually to continue to make it easier for parents, guardians and students to choose to take the bus, walk or bike to school. We need to continue to work to make the active choice the easy choice for the health and safety of our students and community.

The success of Greenway's Action Plan will require students, parents, school staff, City of Beaverton, Beaverton School District, Greenway and South Beaverton Neighborhood Association, and the community to work together to ensure students are able to walk, bike or roll to school safely.

If you would like to be more involved in Greenway Elementary School's SRTS Program, please reach out to school leaders or the PTO, we would love to have you involved!