

# SOUTHRIDGE HIGH SCHOOL FREEZER REPLACEMENT

Beaverton School District  
16550 SW Merlo Road Beaverton, Oregon 97003

## CONTENTS

### architectural

- A1201 OVERALL FLOOR PLAN
- A1401 ENLARGED FLOOR PLAN AND DETAILS

### food service

- FS-100 FOOD SERVICE SYMBOLS, NOTES & INDEX
- FS-101 FOOD SERVICE EQUIPMENT PLAN
- FS-501 FOOD SERVICE CONDUIT PLAN
- FS-502 REFRIGERATION DETAILS
- FS-503 WALK-IN DETAILS
- FS-504 BUILDING WORKS PLAN

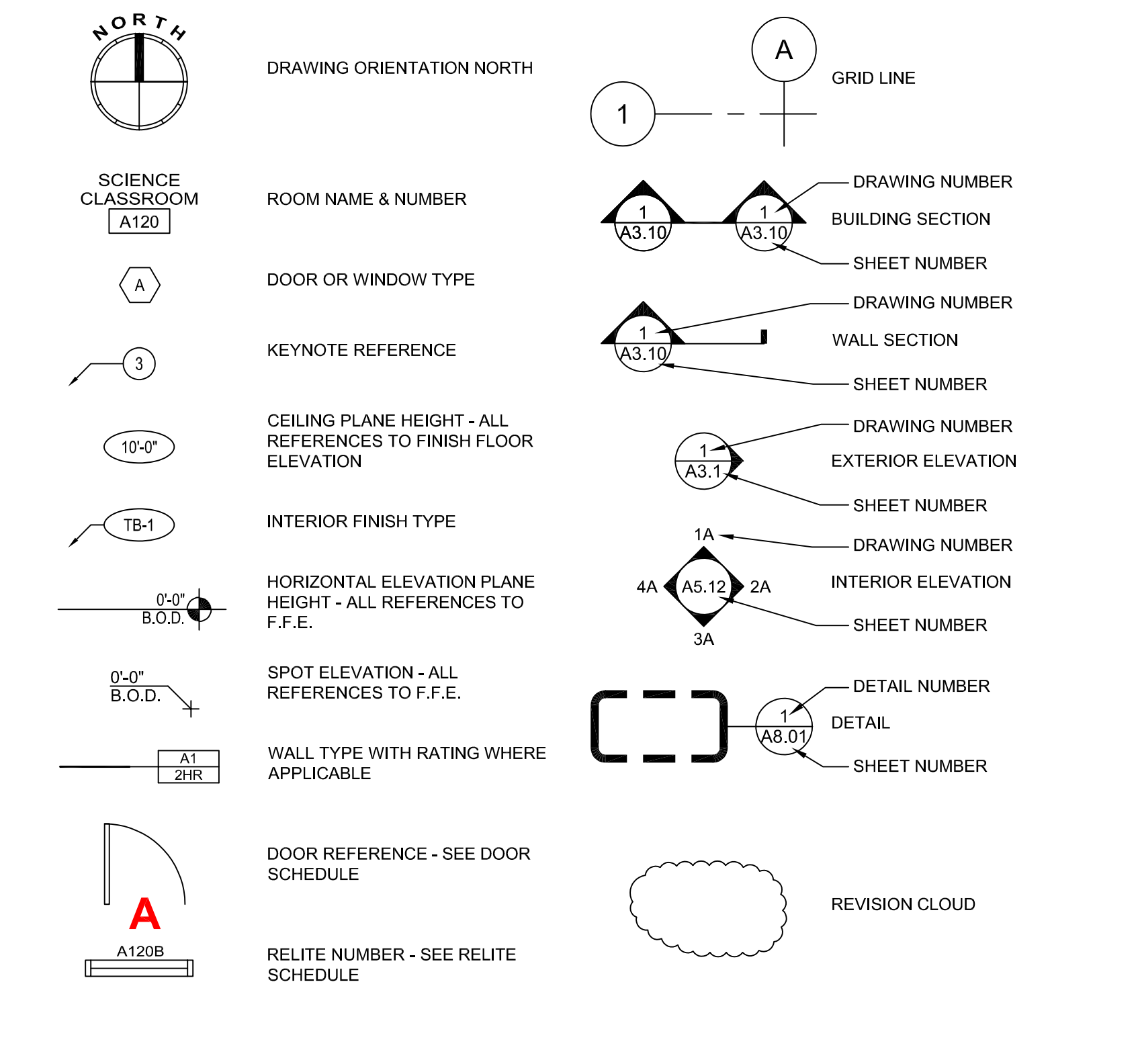
### plumbing

- P0.1 SYMBOL LIST AND GENERAL NOTES - PLUMBING
- PD2.1 DEMO FLOOR PLAN - PLUMBING
- P2.1 FLOOR PLAN - PLUMBING

### electrical

- E0.1 SYMBOL LIST AND GENERAL NOTES - ELECTRICAL
- ED2.1 DEMO FLOOR PLAN - ELECTRICAL
- E2.1 FLOOR PLAN - ELECTRICAL
- E6.1 SCHEDULES - ELECTRICAL

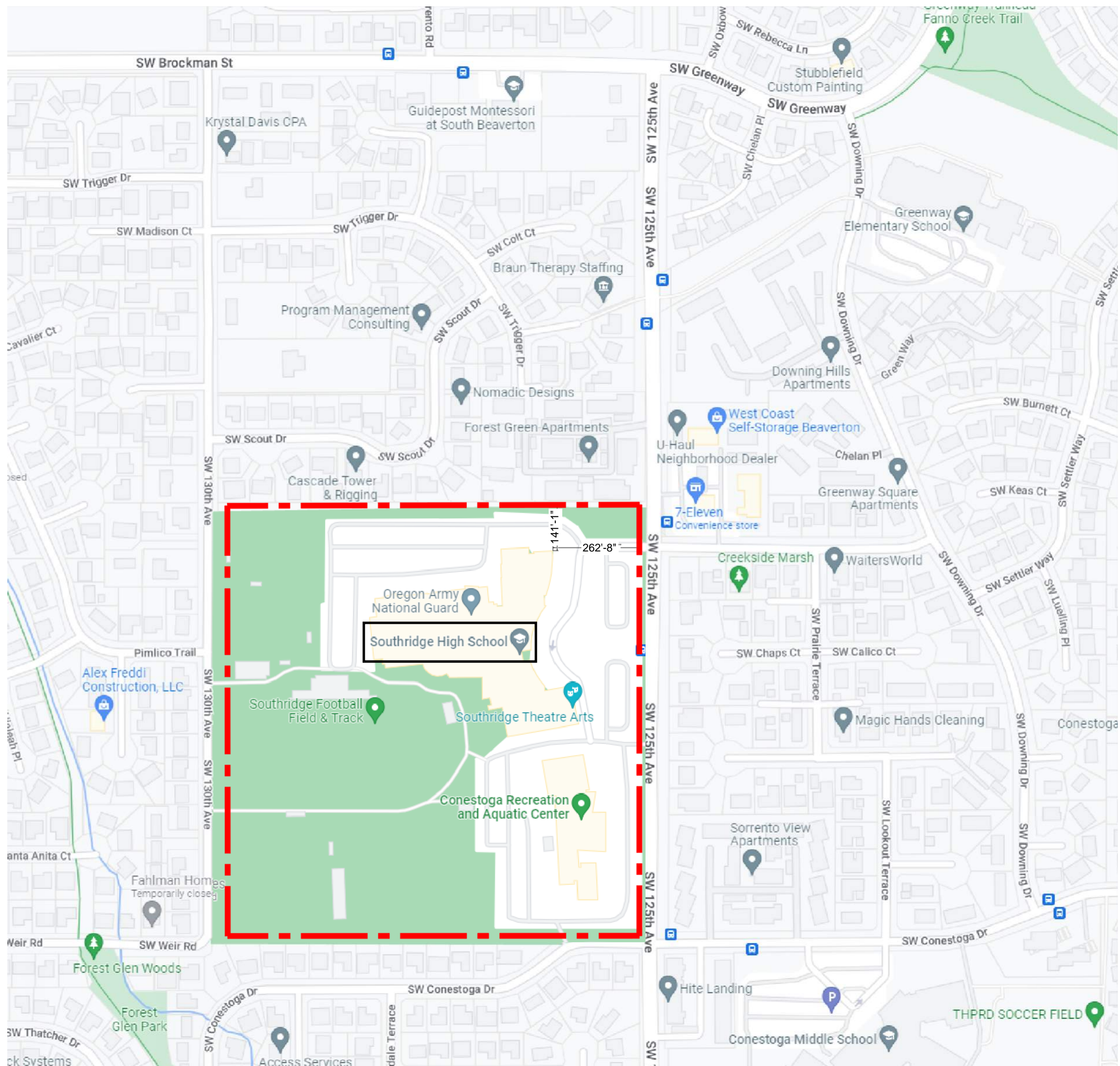
## ARCHITECTURAL SYMBOLS



## ARCHITECTURAL ABBREVIATIONS

∠	ANGLE	FDN	FOUNDATION	O.D.	OVERFLOW DRAIN
&	AND	FE	FIRE EXTINGUISHER	OD	OUTSIDE DIAMETER
AB	ANCHOR BOLT	FEC	FIRE EXTINGUISHER CABINET	OH	OVERHEAD
ACT	ACOUSTICAL CEILING TILE	FF	FINISH FLOOR	OPNG	OPENING
ADD	ADDENDUM	FFE	FINISH FLOOR ELEVATION	OPP	OPPOSITE
A.F.F.	ABOVE FINISH FLOOR	FIN	FINISH	OS	OUTSIDE
AHJ	AUTHORITY HAVING JURISDICTION	FL	FLOOR	PIP	POURED IN PLACE
ALS	AREA LIGHT STANDARD	FO	FACE OF	PL	PROPERTY LINE
ALUM	ALUMINUM	FOC	FACE OF CONCRETE	PLAS	PLASTER
ANOD	ANODIZED	FOF	FACE OF FINISH	PLYWD	PLYWOOD
BC	BOTTOM OF CURB	FOM	FACE OF MASONRY	PSF	PER SQUARE FOOT
BD	BOARD	FOS	FACE OF STUD	P.T.	PRESSURE TREATED
BLDG	BUILDING	FOIC	FURNISHED BY OWNER INSTALLED	PVMT	PAVEMENT
BLKG	BLOCKING	BY CONTRACTOR		R.D.	RADIUS
B.M.	BENCH MARK	FURNISHED BY OWNER INSTALLED		REF	REFERENCE
BM	BEAM	FOIO	BY OWNER	REFR	REFRIGERATOR
BOT	BOTTOM	FRT	FIRE RETARDANT TREATED	REQ'D	REQUIRED
BTU	BRITISH THERMAL UNIT	FURR	FURRING	REV	REVISE OR REVISION
BTWN	BETWEEN	GA	GAUGE	RM	ROOM
COR C	CHANNEL	GALV	GALVANIZED	R.O.	ROUGH OPENING
CB	CATCH BASIN	GB	GRAB BAR	RCP	REFLECTED CEILING PLAN
CCTV	CLOSED CIRCUIT TV	GC	GENERAL CONTRACTOR	SC	SOLID CORE
CG	CORNER GUARD	GL	GLASS	SECT	SECTION
CLG	CEILING	GND	GROUND	SF	SQUARE FOOT
CLR	CLEAR	GVP	GYP SUM VENEER PLASTER	SHITG	SHEATHING
CJ	CONTROL JOINT	GWB	GYP SUM WALL BOARD	SHWR	SHOWER
CMU	CONCRETE MASONRY UNIT	HB	HOSE BIB	SHIT	SHEET
CONT	CONTINUOUS	HC	HANDICAP	SIM	SIMILAR
CORR	CORRIDOR	HDWR	HARDWARE	SJ	SEISMIC JOINT
CS.J	CONSTRUCTION JOINT	HM	HOLLOW METAL	SM	SHEET METAL
CSMT	CASEMENT	HW	HOT WATER	SPEC	SPECIFICATION
CT	CERAMIC TILE	HVAC	HEATING, VENTILATION AND AIR CONDITIONING	SS	STAINLESS STEEL
CTR	CENTER	INSUL	INSULATION	STD	STANDARD
C	CENTERLINE	INT	INTERIOR	STL	STEEL
DBL	DOUBLE	JAN	JANITOR	STOR	STORAGE
DTL	DETAIL	JT	JOINT	STRUCT	STRUCTURAL
DF	DRINKING FOUNTAIN	JST	JOIST	SUSP	SUSPENDED
DIA	DIAMETER	L	LENGTH	T	TEMPERED GLAZING
DIAG	DIAGONAL	LAV	LAVATORY	TC	TOP OF CURB
DIM	DIMENSION	LB	LAG BOLT	TEL	TELEPHONE
DISP	DISPENSER	LKR	LOCKER	T&G	TONGUE AND GROOVE
DN	DOWN	LS	LANDSCAPING	THK	THICK
DP	DAMP PROOFING	LVR	LOUVER	TJ	TOOL JOINT
DR	DOOR	MATL	MATERIAL	TP	TOP OF PAVEMENT
DS	DOWN SPOUT	MAX	MAXIMUM	TST	TUBE STEEL
DWG	DRAWING	MECH	MECHANICAL	TYP	TYPICAL
EA	EACH	MED	MEDIUM	TOD	TOP OF (MATERIAL)
EF	EXHAUST FAN	MEZZ	MEZZANINE	UNFIN	UNFINISHED
EJ	EXPANSION JOINT	MFR	MANUFACTURER	UNO	UNLESS NOTED OTHERWISE
EL	ELEVATION	MH	MANHOLE	VB	VAPOR BARRIER
ELEC	ELECTRICAL	MIN	MINIMUM	VERT	VERTICAL
E.O.S.	EDGE OF SLAB	MIR	MIRROR	VEST	VESTIBULE
ENGR	ENGINEER	MISC	MISCELLANEOUS	VFY	VERIFY
EP	ELECTRICAL PANEL	MTD	MOUNTED	W	WITH
EQ	EQUAL	MTL	METAL	WC	WATER CLOSET
EQUIP	EQUIPMENT	NA	NOT APPLICABLE	WD	WOOD
ES	EACH SIDE	NIC	NOT IN CONTRACT	WF	WIDE FLANGE
EW	EACH WAY	NOM	NOMINAL	WG	WIRE GLASS
EXST	EXISTING	NS	NELSON STUD	WH	WATER HEATER
(E)	EXISTING	NTS	NOT TO SCALE	W/O	WITHOUT
EXP	EXPANSION	OA	OVERALL	WP	WATERPROOFING
EXT	EXTERIOR	OC	ON CENTER	WRB	WATER RESISTIVE BARRIER
FA	FIRE ALARM			WT	WEIGHT
FBO	FURNISHED BY OTHERS				
FD	FLOOR DRAIN				

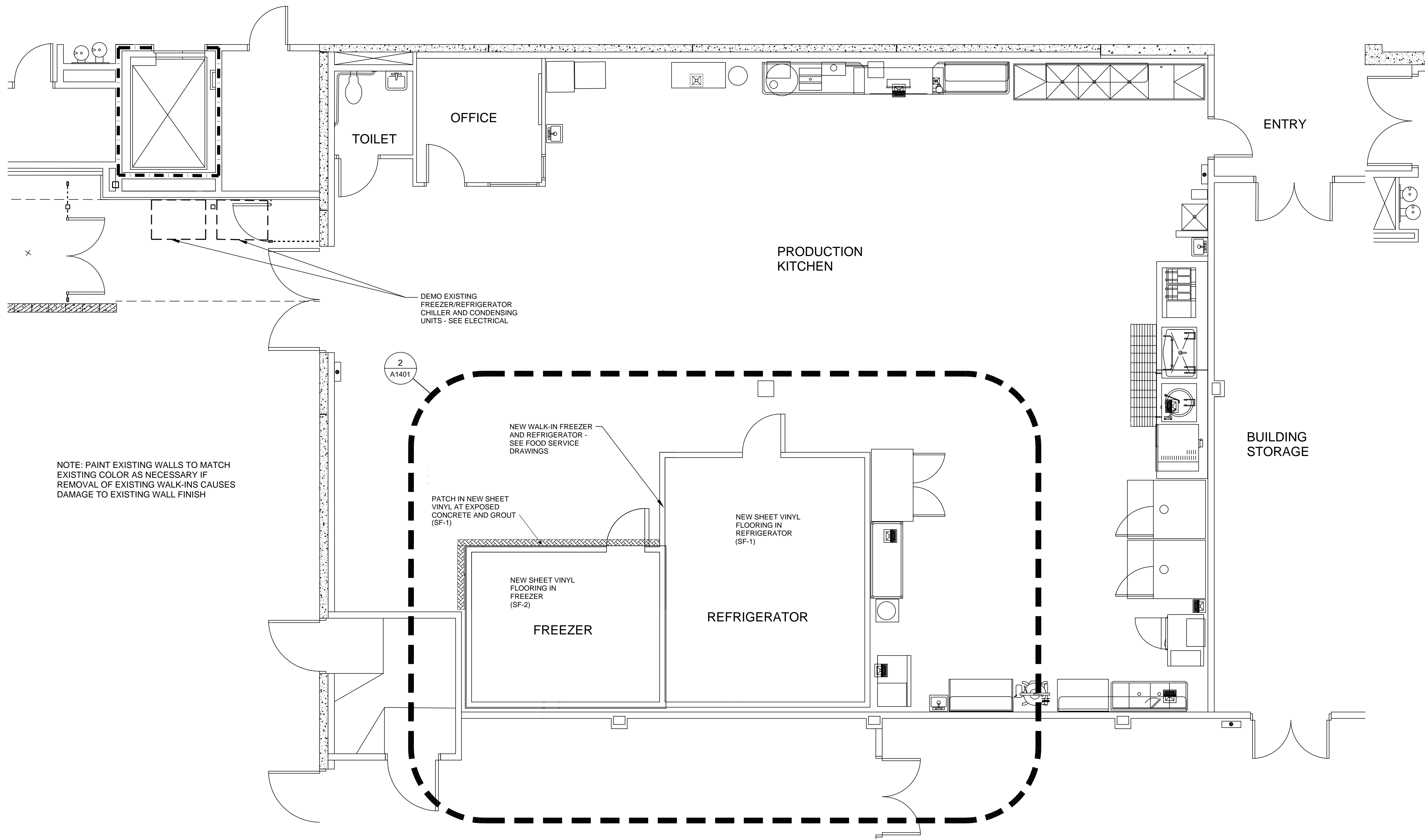
## VICINITY MAP



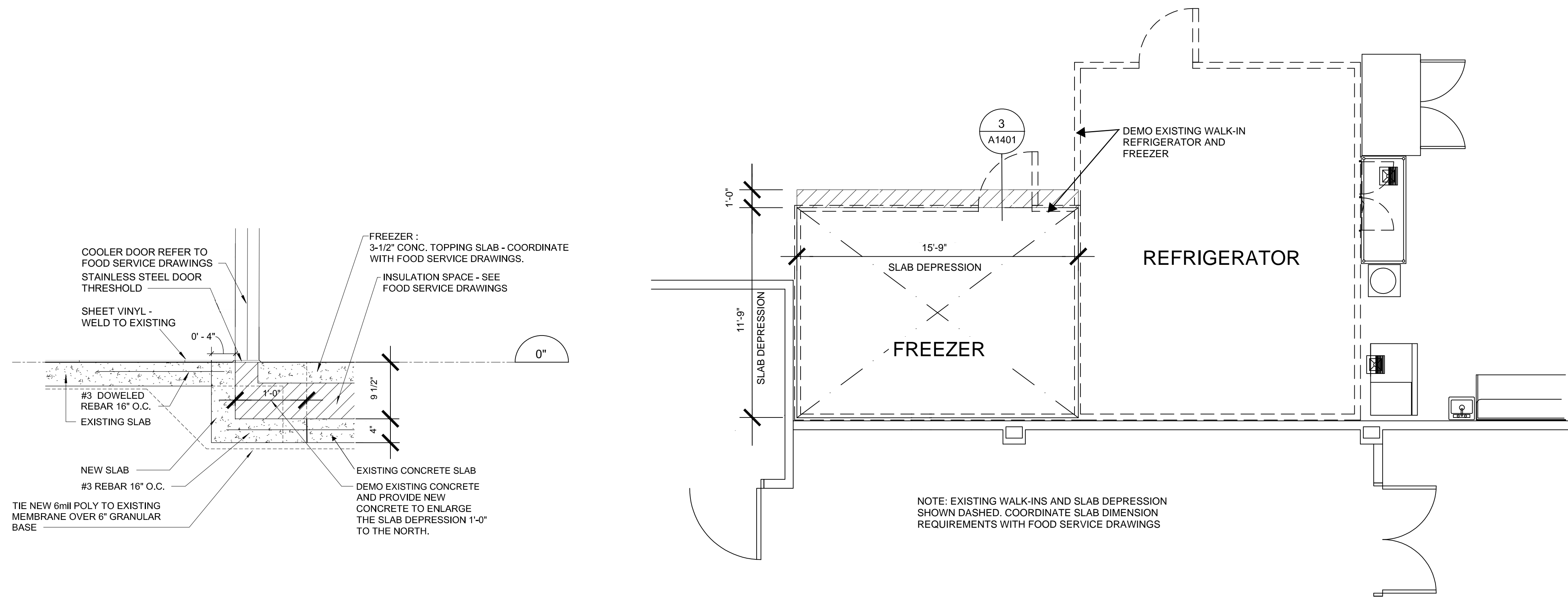








1 ENLARGED FLOOR PLAN - PRODUCTION KITCHEN  
A1401 Scale: 1/4" = 1'-0"




3 RECESSED SLAB TO EXISTING  
A1401 Scale: 1" = 1'-0"

2 ENLARGED FLOOR PLAN - DEMOLITION PLAN  
A1401 Scale: 1/4" = 1'-0"

CLIENT

Beaverton School District

BEAVERTON  
SCHOOL DISTRICT

16550 SW Merlo Rd. OR 97003

COPYRIGHT

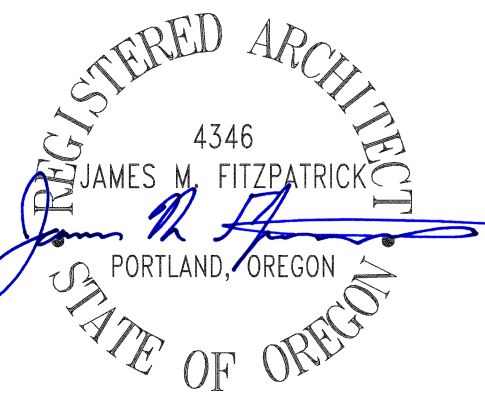
The drawings have been prepared solely for the intended use. No other reproduction or distribution for any purpose other than authorized by IBI Group is permitted. Written permission shall be required for all dimensions and conditions on the job, and IBI Group shall be informed of any variations from the drawings and conditions shown on the drawings. Group drawings shall be submitted to IBI Group for review and approval before proceeding with fabrication.

IBI Group Architects (USA) Inc.  
is a member of the IBI Group of companies

ISSUES		
No.	DESCRIPTION	DATE
1	BID DOCUMENTS	06-06-2022

CONSULTANTS

SEAL



IBI

IBI GROUP  
907 SW Harvey Milk Street  
Portland, OR 97205, USA  
tel 503 226 6950 fax 503 273 9192  
ibigroup@pnw.com

PROJECT

SOUTHRIDGE HS  
FREEZER REPLACEMENT

9625 SW 125TH AVENUE  
BEAVERTON, OR 97008

PROJECT NO:  
139249

DRAWN BY:  
XX

PROJECT MGR:  
XX

SHEET TITLE  
ENLARGED FLOOR PLAN  
AND DETAILS

CHECKED BY:  
XX

APPROVED BY:  
XX

SHEET NUMBER

ISSUE

A1401







**COPYRIGHT**  
This drawing has been prepared solely for the intended use, thus any reproduction or alteration for any purpose other than authorized by IBI Group is prohibited. Written dimensions shall have precedence over scaled dimensions. Contractors shall verify and be responsible for all dimensions and positions on the job, and IBI Group shall be informed of any variations from the dimensions and conditions shown on the drawing. Shop drawings shall be submitted to IBI Group for general concurrence before proceeding with fabrication.

**IBI Group Architects (USA) Inc.**  
is a member of the IBI Group of companies

ISSUES		
No.	DESCRIPTION	DATE
1	BID DOCUMENTS	06-06-2022

CONSULTANTS

**webb.**

1800 S. Lewis St. Anaheim, CA 92805  
P 714.508.1800 www.webbsted.com

SEAL

**IBI GROUP**  
907 SW Harvey Milk Street  
Portland, OR 97205, USA  
tel 503.226.9950 fax 503.273.9192  
ibigroup-edpnmw.com

PROJECT

**SOUTHRIDGE HS  
FREEZER REPLACEMENT**

9625 SW 125TH AVENUE  
BEAVERTON, OR 97008

PROJECT NO:  
XXXXXX

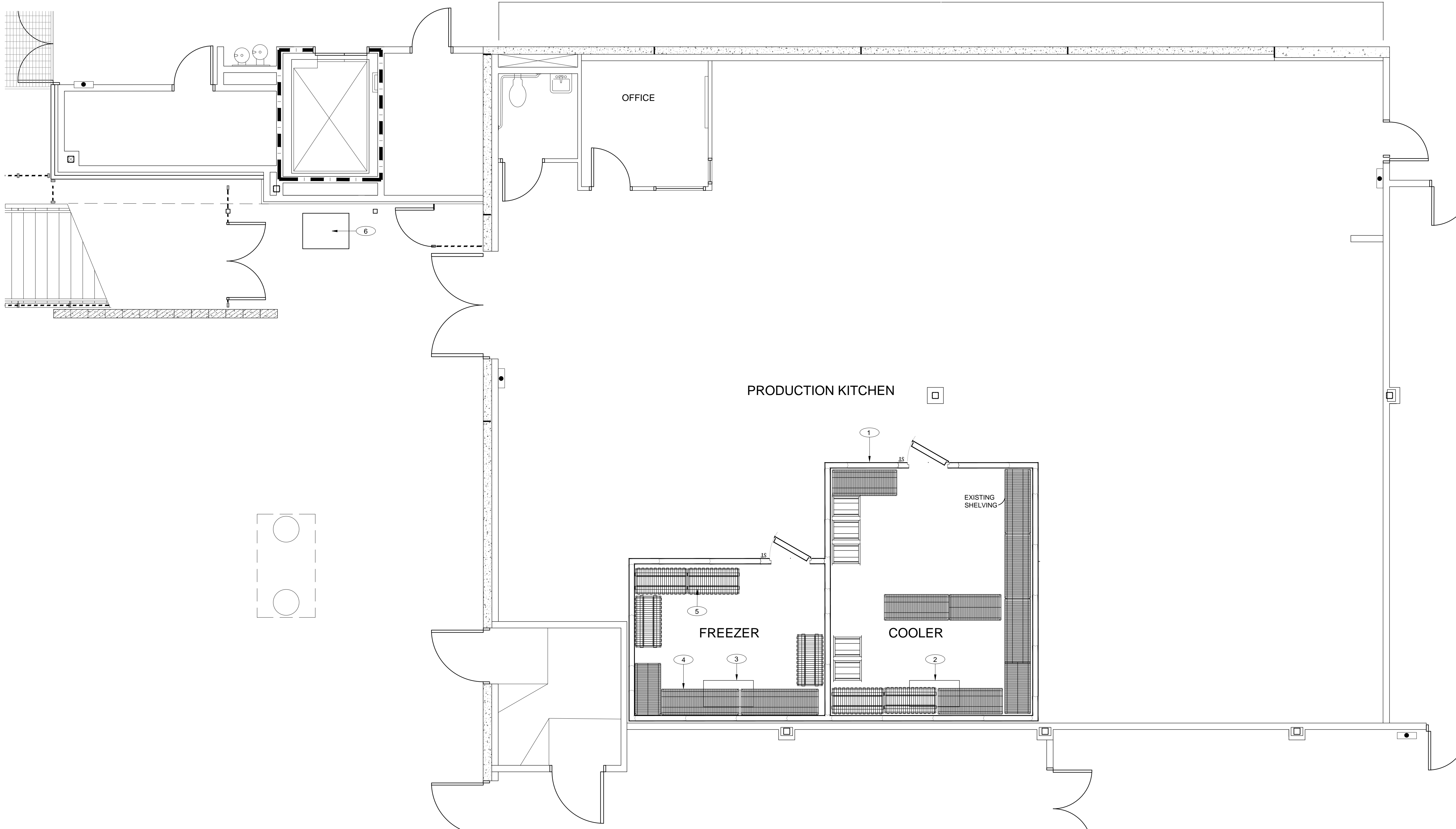
DRAWN BY: <b>XX</b>	CHECKED BY: <b>XX</b>
PROJECT MGR: <b>XX</b>	APPROVED BY: <b>XX</b>

SHEET TITLE

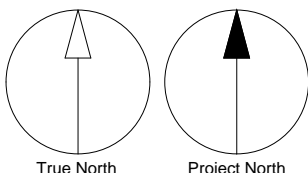
**FOODSERVICE  
EQUIPMENT PLAN**

SHEET NUMBER	ISSUE
<b>FS-101</b>	

EQUIPMENT SCHEDULE					PLUMBING		ELECTRICAL							GENERAL REMARKS
ITEM #	QTY.	DESCRIPTION	MANUFACTURER	MODEL #	I.W.	PLUMBING REMARKS	VOLTS	K.W.	AMPS	H.P.	PHASE	ELEC. CONN.	ELECTRICAL REMARKS	
1	1	WALK-IN COOLER/FREEZER (REMOTE)	IMPERIAL BROWN	CUSTOM			120		10.0		1	D	WIRE THRU LIGHTS, SWITCH AND FREEZER DRAIN LINE HEATER	
2	1	EVAPORATOR COIL (COOLER)	RDT	BEL0155	F.S.	DRAIN TO EXISTING FLOOR SINK	*	*	*	*	D		SEE SHT. X FOR ELEC. REQMTS.	SEE SHT. X FOR ADDITIONAL INFO
3	1	EVAPORATOR COIL (FREEZER)	RDT	BEL0130	F.S.	DRAIN TO EXISTING FLOOR SINK	*	*	*	*	D		SEE SHT. X FOR ELEC. REQMTS.	SEE SHT. X FOR ADDITIONAL INFO
4	3	FREEZER SHELVING	CAMBRO	CAMSHELVING										
5	4	DUNNAGE RACK	METRO	HP55C										
6	1	REMOTE REFRIGERATION RACK (OUTDOOR, AIR-COOLED)	RDT	ZS2-02Z-CT3-AST			208-230		28.8		3	D	SEE SHT. X FOR ELEC. REQMTS.	SEE SHT. X FOR ADDITIONAL INFO



1 EQUIPMENT FLOOR PLAN  
1/4" = 1'-0"

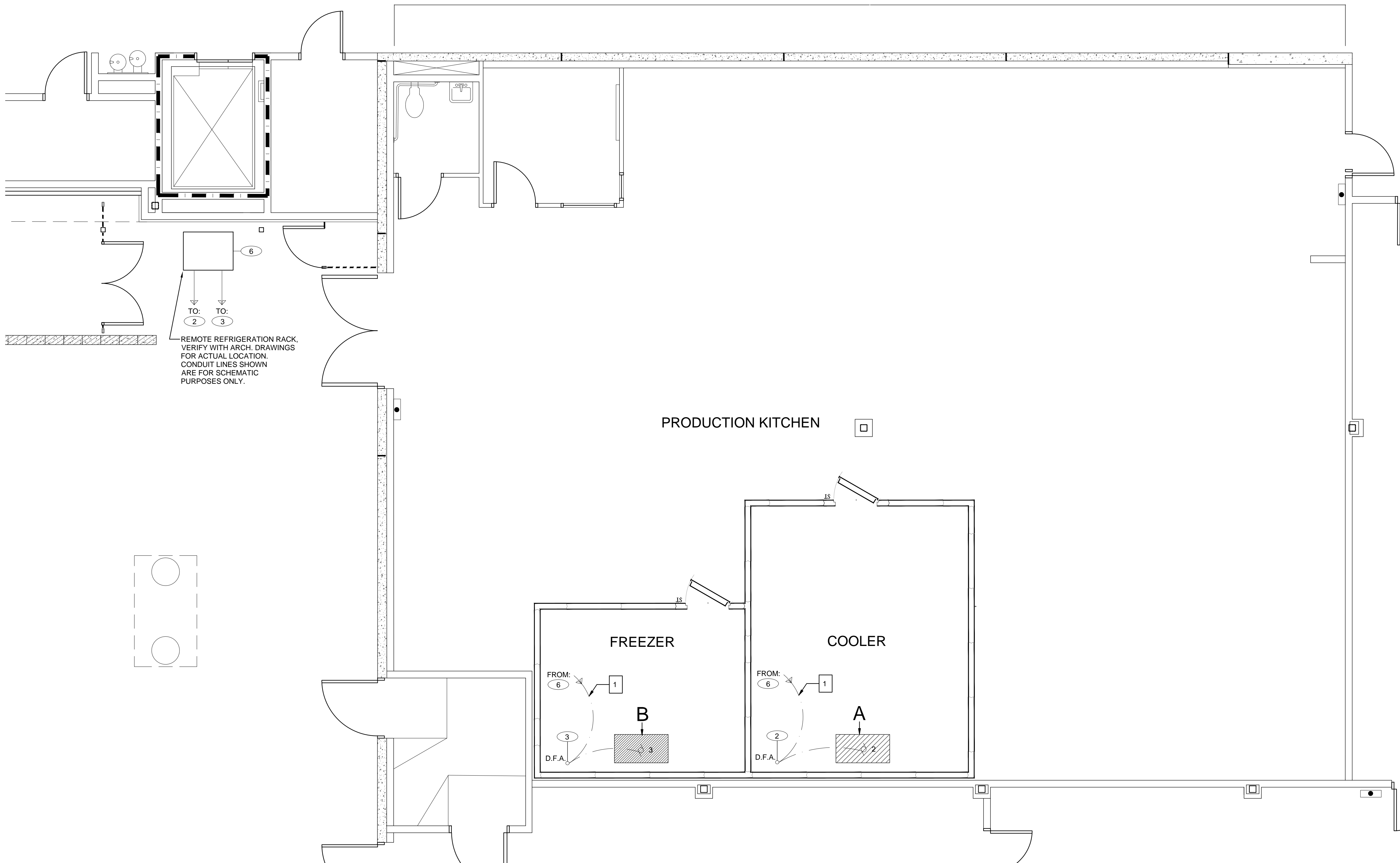


REFRIGERATION NOTES

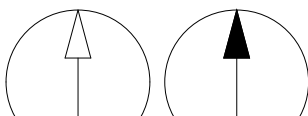
- REFRIGERATION CONTRACTOR SHALL INSULATE ALL REFRIGERATION LINES WHERE REQUIRED BY CODE.
- REFRIGERATION CONTRACTOR SHALL VERIFY LOCATION OF ALL REMOTE REFRIGERATION SYSTEM COMPONENTS, INCLUDING EVAPORATOR COILS, REFRIGERATION RACK, COMPRESSORS, CONDENSORS, ETC.
- REFRIGERATION CONTRACTOR SHALL VERIFY LOCATION OF PITCH POCKET FOR REFRIGERATION LINE PENETRATION THRU ROOF WITH GENERAL CONTRACTOR. GENERAL CONTRACTOR TO INSTALL PITCH POCKETS, CURB, CAP AND FLASHING.
- GENERAL CONTRACTOR TO PROVIDE A WATERPROOF SEAL OF ALL PENETRATIONS THROUGH THE ROOF AFTER REFRIGERATION LINES HAVE BEEN RUN.
- REFRIGERATION CONTRACTOR TO SEAL ENDS OF CONDUIT AFTER ALL REFRIGERATION LINES HAVE BEEN RUN.
- CLEARANCE IS REQUIRED AROUND THE PERMITER OF ROOF MOUNTED REFRIGERATION EQUIPMENT FOR SYSTEM MAINTENANCE. REFER TO MANUFACTURER'S MINIMUM SPACE REQUIREMENTS.
- PROPER VENTILATION IS REQUIRED FOR REFRIGERATION EQUIPMENT/RACK. SEE REFRIGERATION SYSTEM DRAWINGS FOR REQUIREMENTS AND MANUFACTURERS DATA OR INSTALLATION REQUIREMENTS
- REFRIGERATION RACK SYSTEM MANUFACTURER TO PROVIDE AND INSTALL ALL REQUIRED ELECTRICAL COMPONENTS (FUSED DISCONNECT, TIME CLOCKS, MAGNETIC STARTERS, DRAIN LINE HEATERS, ETC.) AND FACTORY WIRED (CONDUIT AND CABLE) FOR ALL CONTROLS WITHIN THE REFRIGERATION SYSTEM (PER DIVISION 16) TO A SINGLE POINT OF SERVICE FOR POWER CONNECTIONS. REFRIGERATION RACK SHALL BE UL LISTED. ELECTRICAL CONTRACTOR TO PROVIDE ALL CONDUIT AND WIRING BETWEEN REFRIGERATION RACK AND REMOTELY LOCATED SYSTEM COMPONENTS.
- ALL SYSTEMS AND COMPONENTS SHALL BE LABELED. PROVIDE A COPY OF THE REFRIGERATION PLAN IN AN EASILY ACCESSIBLE WEATHER PROTECTED AREA.

REFRIG. SYMBOLS

**A,B,C...** IDENTIFIES REFRIGERATION SYSTEM AS SHOWN ON SHEET FS-502



1 REFRIGERATION CONDUIT PLAN  
1/4" = 1'-0"



CLIENT  
Beaverton School District

**BEAVERTON**  
SCHOOL DISTRICT

16550 SW Merlo Rd. OR 97003

**COPYRIGHT**  
This drawing has been prepared solely for the intended use, thus any reproduction or distribution for any purpose other than authorized by IBI Group is prohibited. Written dimensions shall have precedence over scaled dimensions. Contractors shall verify and be responsible for all dimensions and positions on the job, and IBI Group shall be informed of any variations from the dimensions and conditions shown on the drawing. Shop drawings shall be submitted to IBI Group for general performance before proceeding with installation.

**IBI Group Architects (USA) Inc.**  
is a member of the IBI Group of companies

ISSUES		
No.	DESCRIPTION	DATE
1	BID DOCUMENTS	06-06-2022

CONSULTANTS

**webb.**  
1800 S. Lewis St., Anaheim, CA 92805  
P 714.528.1800 www.webbstad.com

**IBI GROUP**  
907 SW Harvey Milk Street  
Portland, OR 97205, USA  
tel 503.276.9950 fax 503.273.9192  
ibigroup-edpnm.com

PROJECT  
**SOUTHRIDGE HS  
FREEZER REPLACEMENT**  
9625 SW 125TH AVENUE  
BEAVERTON, OR 97008

PROJECT NO:  
XXXXXX

DRAWN BY: <b>XX</b>	CHECKED BY: <b>XX</b>
PROJECT MGR: <b>XX</b>	APPROVED BY: <b>XX</b>

SHEET TITLE  
**REFRIGERATION  
CONDUIT PLAN**

SHEET NUMBER <b>FS-501</b>	ISSUE
-------------------------------	-------

SEAL

True North  
Project North

Scale 1/4" = 1'-0"

BM 3607/XXXXX - BSD SOUTHRIDGE HS FREEZER REPLACEMENT











BUILDING WORKS NOTES

1. ALL WORK SHOWN ON BUILDING WORKS PLAN TO BE BY GENERAL CONTRACTOR UNLESS OTHERWISE NOTED.

BLDG. WORKS LEGEND

INDICATES FREEZER DEPRESSION

CLIENT  
Beaverton School District



16550 SW Merlo Rd. OR 97003

**COPYRIGHT**  
This drawing has been prepared solely for the intended use, thus any reproduction or alteration for any purpose other than authorized by IBI Group is prohibited. Written dimensions shall have precedence over scaled dimensions. Contractors shall verify and be responsible for all dimensions and conditions on the job, and IBI Group shall be informed of any variations from the dimensions and conditions shown on the drawing. Shop drawings shall be submitted to IBI Group for general concurrence before proceeding with installation.

IBI Group Architects (USA) Inc.  
is a member of the IBI Group of companies

ISSUES		
No.	DESCRIPTION	DATE
1	BID DOCUMENTS	06-06-2022

CONSULTANTS



1800 S. Lewis St. Anaheim, CA 92805  
P 714.508.1800 www.webbstad.com

SEAL



PROJECT  
**SOUTHRIDGE HS  
FREEZER REPLACEMENT**  
9625 SW 125TH AVENUE  
BEAVERTON, OR 97008

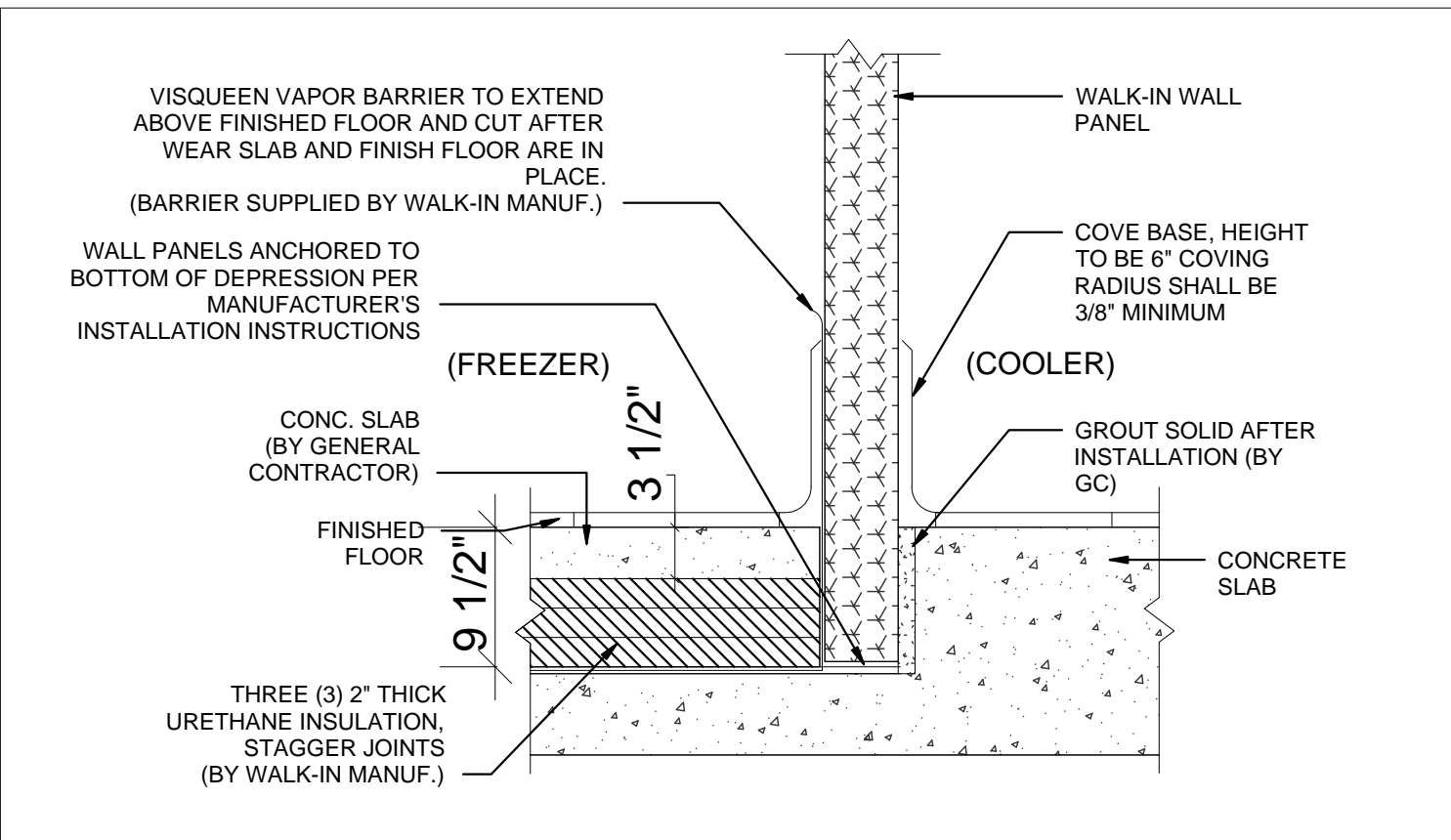
PROJECT NO:  
XXXXXX  
DRAWN BY:  
**XX**  
PROJECT MGR:  
**XX**

CHECKED BY:  
**XX**  
APPROVED BY:  
**XX**

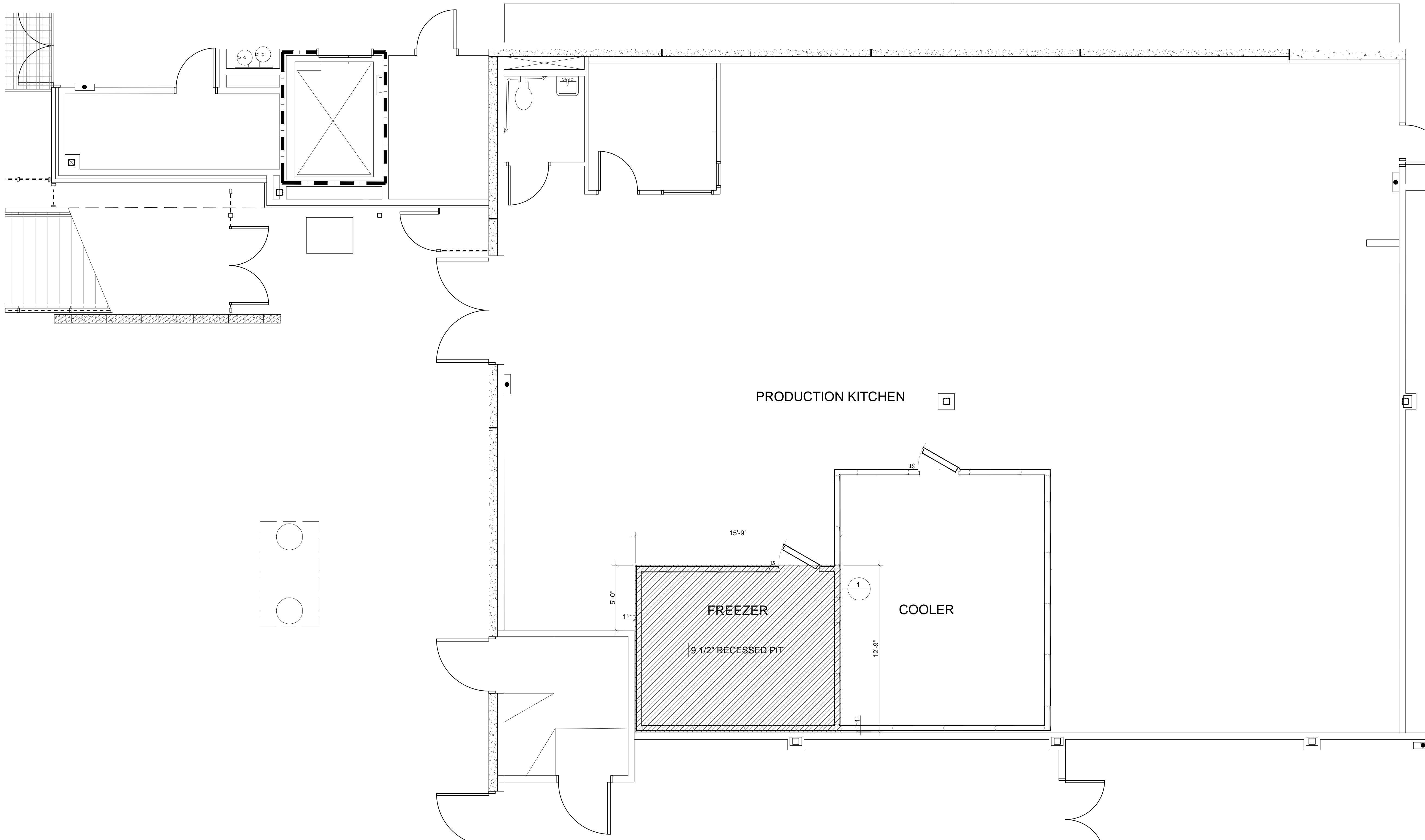
SHEET TITLE  
**BUILDING WORKS  
PLAN**

SHEET NUMBER  
**FS-504**

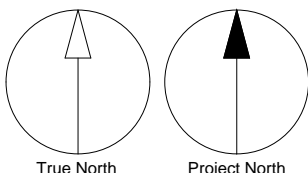
ISSUE



1 FREEZER DEPRESSION DETAIL - FREEZER TO COOLER  
NOT TO SCALE



1 BUILDING WORKS PLAN  
1/4" = 1'-0"



BM 360/XXXXX - BSD SOUTHRIDGE HS FREEZER REPLACEMENT



PLUMBING SYMBOL LIST

NOTE: This is a standard symbol list and not all items listed may be used.

Abbreviations

(A)	ABANDON IN PLACE
AFF	ABOVE FINISHED FLOOR
&	AND
@	AT
BFF	BELOW FINISHED FLOOR
BF	BLIND FLANGE
BLDG	BUILDING
CO	CLEANOUT
CW	COLD WATER
CD	CONDENSATE DRAIN
CONT.	CONTINUATION
(X)	DEMOLISH
DN	DOWN
D	DRAIN
DWV	DRAINAGE, WASTE AND VENT
ELECT	ELECTRICAL
ESV	ELECTRONIC SOLENOID VALVE
(E)	EXISTING
FT	FEET
FPS	FEET PER SECOND
FFE	FINISHED FLOOR ELEVATION
FL	FLOOR
FCO	FLOOR CLEANOUT
FD	FLOOR DRAIN
FS	FLOOR SINK, FLOW SWITCH
-	FOOT, FEET
(F)	FUTURE
GPH	GALLONS PER HOUR
GPM	GALLONS PER MINUTE
GW	GREASE WASTE
HZ	HERTZ
IN, "	INCHES
IW	INDIRECT WASTE
INV	INVERT ELEVATION
KW	KILOWATT
MAX	MAXIMUM
MIN	MINIMUM
(N)	NEW
N	NORTH
N/A	NOT APPLICABLE
NIC	NOT IN CONTRACT
NTS	NOT TO SCALE
#	NUMBER
NO.	NUMBER
OFCI	OWNER FURNISHED, CONTRACTOR INSTALLED
OFOI	OWNER FURNISHED, OWNER INSTALLED
PLBG	PLUMBING
P	PLUMBING, PUMP
POC	POINT OF CONNECTION
PSI	POUNDS PER SQUARE INCH
PD	PRESSURE DROP, PLUMBING DEMOLITION, PUMPED DISCHARGE
QTY	QUANTITY
RPM	REVOLUTIONS PER MINUTE
SAN	SANITARY
SJ	SEISMIC JOINT
SHT	SHEET
SF	SQUARE FEET
TP	TRAP PRIMER, TOTAL PRESSURE
TYP	TYPICAL
V	VACUUM, VENT, VOLT
VFD	VARIABLE FREQUENCY DRIVE
VS	VENT STACK
VTR	VENT THRU ROOF
WCO	WALL CLEANOUT
W	WASTE
WC	WATER COLUMN
WC	WATER COLUMN, WATER CLOSET
WSFU	WATER SUPPLY FIXTURE UNIT
W/	WITH

General

	CONTINUATION
	EQUIPMENT IDENTIFICATION
	EXTENT OF DEMOLITION
	FIXTURE TAG (LEVEL BELOW FIXTURE)
	FOOD SERVICE EQUIPMENT / CALCULATION TAG
	KEYED NOTE
	PIPE BELOW GRADE
	POINT OF CONNECTION
	DEMOLISH
	EXISTING WORK
	NEW WORK
	PIPE OR CONDUIT BELOW GRADE

Piping Fittings

	CAP
	CLEANOUT TO GRADE
	CONCENTRIC REDUCER
	FLOOR CLEANOUT
	FLOOR SINK
	PIPE DROP
	PIPE RISE
	TEE DOWN ON PIPE
	TEE UP ON PIPE

Piping Systems

	COLD WATER PIPING
	CONDENSATE / INDIRECT DRAIN PIPING
	GREASE WASTE ABOVE GRADE OR FINISHED FLOOR
	GREASE WASTE BELOW GRADE OR FINISHED FLOOR
	SANITARY VENT PIPING
	SANITARY WASTE OR SOIL PIPING ABOVE GRADE OR FINISHED FLOOR
	SANITARY WASTE OR SOIL PIPING BELOW GRADE OR FINISHED FLOOR

GENERAL PLUMBING NOTES

- A. ALL WORK UNDER THIS CONTRACT SHALL CONFORM TO THE CURRENT STATE, COUNTY AND NATIONAL CODES AND STANDARDS ADOPTED BY THE LOCAL JURISDICTIONS INCLUDING APPLICABLE AMENDMENTS.
- B. CONDITIONS SHOWN ON THE PLANS RELATIVE TO THE WORK TO BE PERFORMED ARE BASED ON THE BEST INFORMATION AVAILABLE AND SUBJECT TO VERIFICATION. VERIFY LOCATIONS AND ELEVATIONS OF UTILITIES TO BE GROSSED OR CONNECTED. CORRECT DEFICIENCIES CAUSED BY FAILURE TO PERFORM SUCH VERIFICATIONS AT NO EXPENSE TO THE OWNER. IMMEDIATELY NOTIFY ARCHITECT AND ENGINEER OF THE CONDITION IN CONFLICT WITH THE PLANS.
- C. COORDINATE FIXTURES, EQUIPMENT, PIPE ROUGH-IN/CONNECTIONS LOCATION AND DRAIN LOCATIONS WITH FREEZER / COOLER MANUFACTURER.
- D. INSTALL ALL CONDENSATE PIPING AT A MINIMUM SLOPE OF 1/4" PER FOOT.

CLIENT

Beaverton School District



16550 SW Merlo Rd. OR 97003

COPYRIGHT

This drawing has been prepared solely for the intended use. Any reproduction or distribution for any purpose other than authorized by IB Group is forbidden. Any person who reproduces or distributes this drawing without the written consent of IB Group shall be liable for any damages caused by such reproduction or distribution. IB Group shall be relieved of any liability for any damages caused by such reproduction or distribution. Stop drawings shall be submitted to IB Group for general confirmation before proceeding with fabrication.

PLEASE CHOOSE LEGAL ENTITY  
is a member of the IB Group of companies

ISSUES

No.	DESCRIPTION	DATE
1	BID DOCUMENTS	06-06-2022

CONSULTANTS



PROJECT: 2022-0525  
CONTACT: TODD KOLBABA  
100 SW Main Street, Suite 1600  
Portland, OR 97204  
TEL: 503.362.2266  
www.interfaceengineering.com

SEAL



SELECT CONSULTANT TYPE



PROJECT  
BSD Southridge HS Freezer Replacement  
16550 SW Merlo Rd. OR 97003

PROJECT NO. Project Number	CHECKED BY: JMM
DRAWN BY: TK	APPROVED BY: JMM

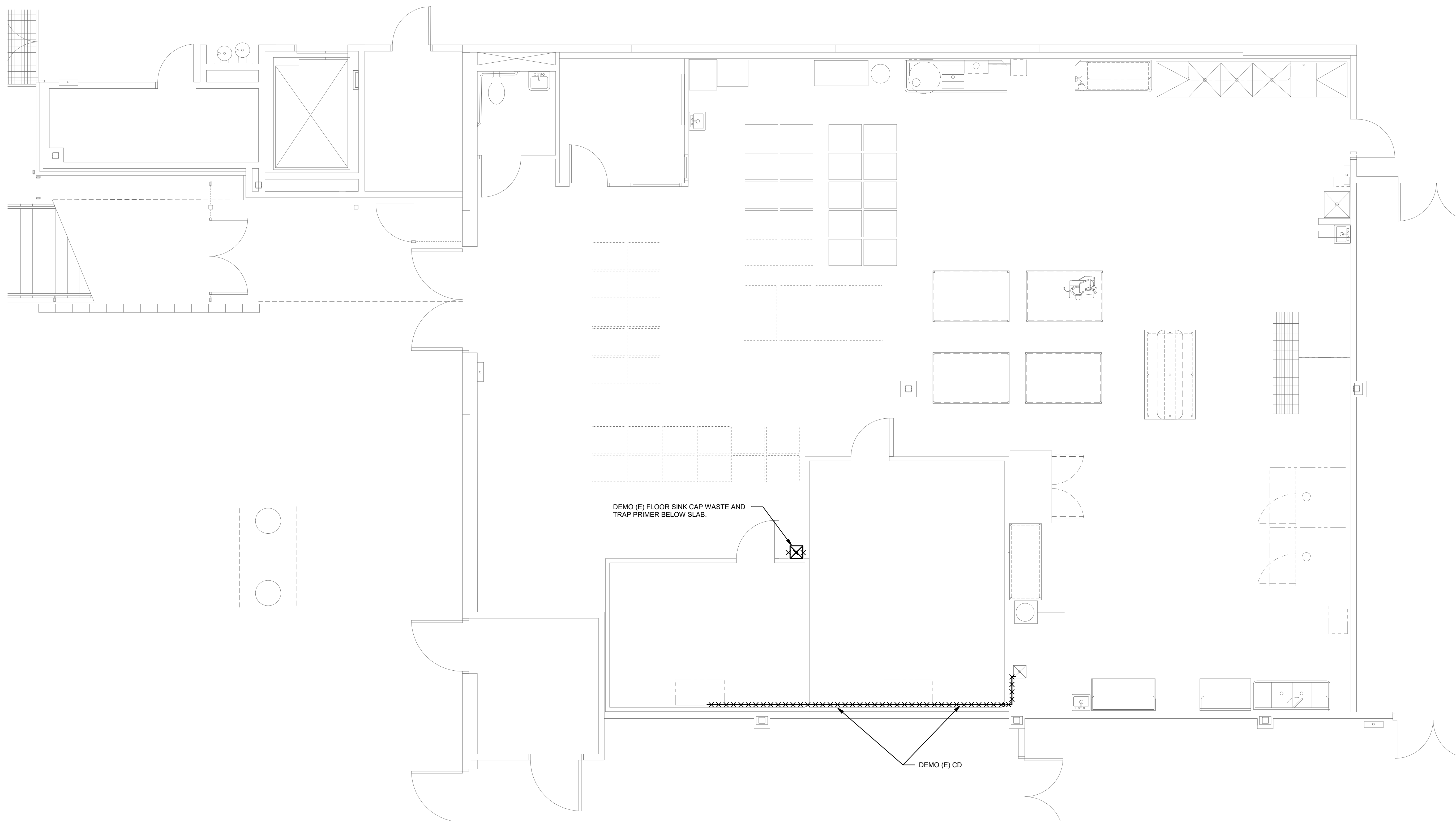
SHEET TITLE  
SYMBOL LIST AND GENERAL NOTES - PLUMBING

SHEET NUMBER P0.1	ISSUE 1
----------------------	------------

SHEET INDEX

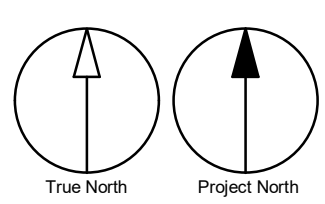
P0.1	SYMBOL LIST AND GENERAL NOTES - PLUMBING
PD2.1	DEMO FLOOR PLAN - PLUMBING
P2.1	FLOOR PLAN - PLUMBING






1 DEMO FLOOR PLAN - PLUMBING

0 2 4 8  
1/4" = 1'-0"



CLIENT

Beaverton School District

**BEAVERTON**  
SCHOOL DISTRICT

16550 SW Merlo Rd. OR 97003

COPYRIGHT

This drawing has been prepared solely for the intended use. Any reproduction or distribution for any purpose other than authorized by IB Group is prohibited. Any reproduction without the prior written permission of IB Group is prohibited. Contractors shall verify and be responsible for all dimensions and conditions on the job, and IB Group shall be relieved of any liability from the dimensions and conditions shown on the drawing. Shop drawings shall be submitted to IB Group for general confirmation before proceeding with fabrication.


PLEASE CHOOSE LEGAL ENTITY

is a member of the IB Group of companies

ISSUES

No.	DESCRIPTION	DATE
1	BID DOCUMENTS	06-06-2022

CONSULTANTS

**INTERFACE**  
ENGINEERING

PROJECT: 2022-0525

CONTACT: TODD KOLBABA


100 SW Main Street, Suite 1600

Portland, OR 97204


TEL 503.362.2266

www.interfaceengineering.com

SEAL



SELECT CONSULTANT TYPE

**IBI GROUP**  
907 SW Harvey Milk Street  
Portland, OR 97205, USA  
tel 503 226 6950 fax 503 273 9192  
ibigroup-espnw.com

PROJECT

**BSD Southridge HS Freezer Replacement**

16550 SW Merlo Rd. OR 97003

PROJECT NO:

Project Number

DRAWN BY:

**TK**

CHECKED BY:

**JMM**

PROJECT MGR:

**TK**

APPROVED BY:

**JMM**

SHEET TITLE

**DEMO FLOOR PLAN - PLUMBING**

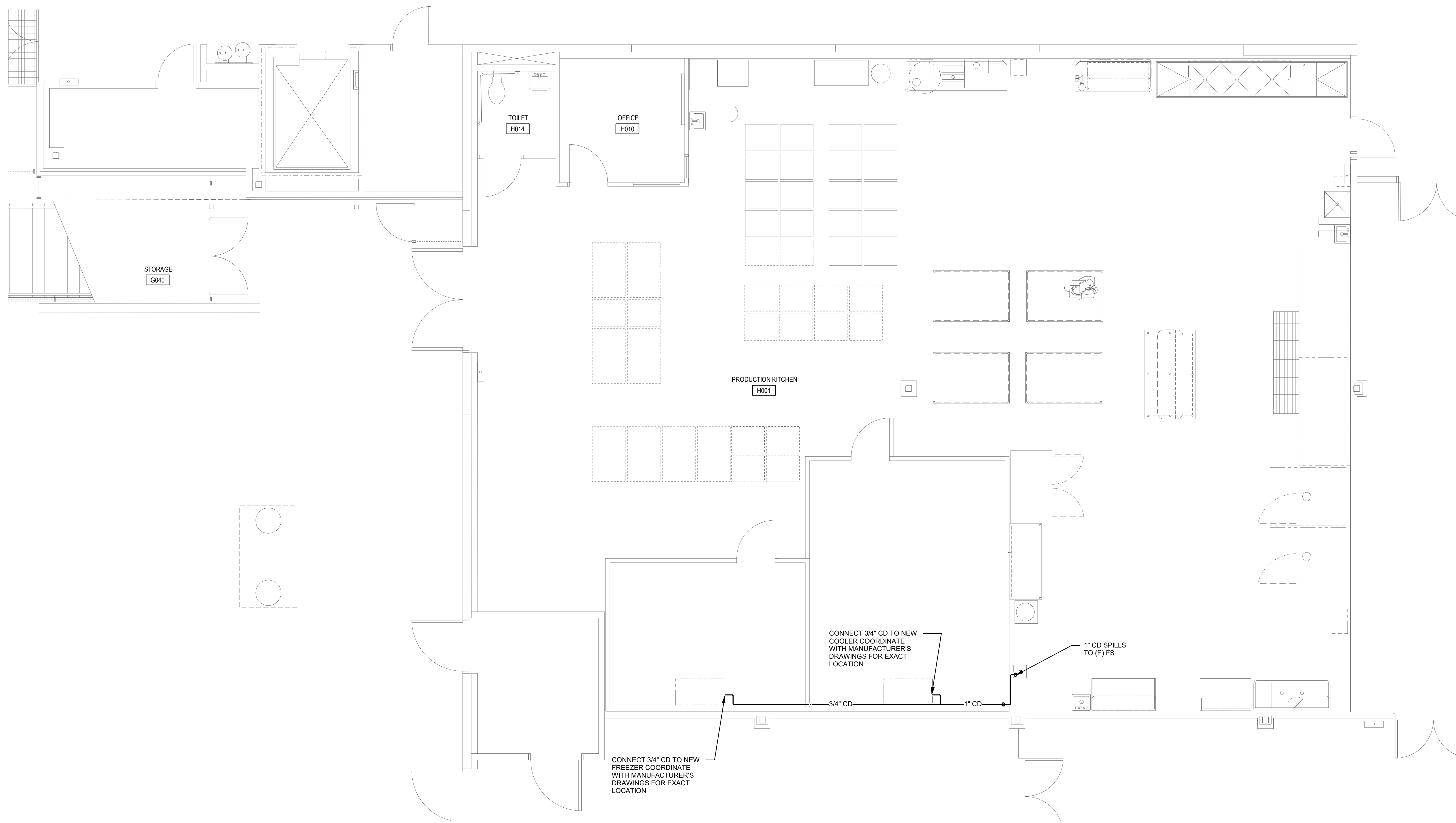
SHEET NUMBER

**PD2.1**

ISSUE

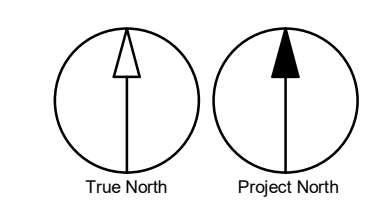
**1**






**1 FLOOR PLAN - PLUMBING**

0 2 4 8  
1/4" = 1'-0"



CLIENT

Beaverton School District

**BEAVERTON**  
SCHOOL DISTRICT

16550 SW Merlo Rd. OR 97003

COPYRIGHT


This drawing has been prepared solely for the intended use. Any reproduction or distribution for any purpose other than authorized by IB Group is forbidden. Any reproduction without the prior written consent of IB Group is prohibited. Contractors shall verify and be responsible for all dimensions and conditions on the job, and IB Group shall be relieved of any liability from the dimensions and conditions shown on the drawing. Shop drawings shall be submitted to IB Group for general confirmation before proceeding with fabrication.

PLEASE CHOOSE LEGAL ENTITY

is a member of the IB Group of companies


ISSUES		
No.	DESCRIPTION	DATE
1	BID DOCUMENTS	06-06-2022

CONSULTANTS


**INTERFACE**  
ENGINEERING

PROJECT: 2022-0525  
CONTACT: TODD KCLUBABA  
100 SW Main Street, Suite 1600  
Portland, OR 97204  
TEL 503.362.2266  
www.interfaceengineering.com

SEAL



SELECT CONSULTANT TYPE

**IB GROUP**  
907 SW Harvey Milk Street  
Portland, OR 97205, USA  
tel 503 226 6950 fax 503 273 9192  
ibgroup-espinw.com

PROJECT

**BSD Southridge HS Freezer Replacement**

16550 SW Merlo Rd. OR 97003

PROJECT NO. Project Number	
DRAWN BY: <b>TK</b>	CHECKED BY: <b>JMM</b>
PROJECT MGR: <b>TK</b>	APPROVED BY: <b>JMM</b>

SHEET TITLE

**FLOOR PLAN - PLUMBING**

SHEET NUMBER	ISSUE
<b>P2.1</b>	<b>1</b>



ELECTRICAL SYMBOL LIST

NOTE: This is a standard symbol list and not all items listed may be used.

Abbreviations

AFC	ABOVE FINISHED CEILING
AFF	ABOVE FINISHED FLOOR
AFG	ABOVE FINISHED GRADE
ARF	ABOVE RAISED FLOOR
ANSI	AMERICAN NATIONAL STANDARDS INSTITUTE
AWG	AMERICAN WIRE GAUGE
A	AMPERES, AMBER
AV	AUDIO VISUAL
AHJ	AUTHORITY HAVING JURISDICTION
AIC	AVAILABLE INTERRUPTING CAPACITY
BAS	BUILDING AUTOMATION SYSTEM
CA	CABLE
CAT	CATEGORY
CLG	CEILING
CB	CIRCUIT BREAKER
C	CONDUIT, CLOSE, CONTROL
CFCI	CONTRACTOR FURNISHED CONTRACTOR INSTALLED
CFOI	CONTRACTOR FURNISHED OWNER INSTALLED
COORD	COORDINATE
CU	COPPER
dB	DECIBEL
(X)	DEMOLISH
DTL	DETAIL
DIA	DIAMETER
DIM	DIMENSION
DIV	DIVISION
DN	DOWN
DWG	DRAWING
EA	EACH
EMT	ELECTRICAL METALLIC TUBING
ENT	ELECTRICAL NON-METALLIC TUBING
ESD	ELECTROSTATIC DISCHARGE
EL	ELEVATION
E	EMERGENCY
EF	EXHAUST FAN
(E)	EXISTING
FMS	FACILITY MANAGEMENT SYSTEMS
FF	FINISH FLOOR
FA	FIRE ALARM
FACP	FIRE ALARM CONTROL PANEL
FMC	FLEXIBLE METAL CONDUIT
FT	FOOT, FEET
FBO	FURNISHED BY OTHERS
G, GND	GROUND
GFCI	GROUND FAULT CIRCUIT INTERRUPTER
GFI	GROUND FAULT INTERRUPTER
GFP	GROUND FAULT PROTECTION
GE	GROUNDING EQUALIZER
HH	HANDHOLE
HT	HEIGHT
HC	HORIZONTAL CROSS CONNECT
ID	IDENTIFICATION
IN	INCH, INCHES
IEEE	INSTITUTE OF ELECTRICAL AND ELECTRONICS ENGINEERS
IMC	INTERMEDIATE METAL CONDUIT
IG	ISOLATED GROUND
KV	KILOVOLT
KVA	KILOVOLT AMPERES
KW	KILOWATT
LED	LIGHT EMITTING DIODE
LNC	LIQUID TIGHT FLEXIBLE NONMETALLIC CONDUIT
LFMC	LIQUIDTIGHT FLEXIBLE METAL CONDUIT
LV	LOW VOLTAGE
MOCP	MAXIMUM OVERCURRENT PROTECTION
MHz	MEGAHERTZ
MA	MILLIAMPERES
MIN	MINIMUM
MCA	MINIMUM CIRCUIT AMPS
MISC	MISCELLANEOUS
M	MOTOR
MCC	MOTOR CONTROL CENTER
MT, MTD	MOUNT, MOUNTED
MDU	MULTI-DWELLING UNIT
NEC	NATIONAL ELECTRIC CODE
NESC	NATIONAL ELECTRIC SAFETY CODE
NEMA	NATIONAL ELECTRICAL MANUFACTURERS ASSOCIATION
N	NEUTRAL
(N)	NEW
NC	NORMALLY CLOSED
NO	NORMALLY OPEN
NA	NOT APPLICABLE
N.I.C.	NOT IN CONTRACT
NTS	NOT TO SCALE
OC	ON CENTER
OSP	OUTSIDE PLANT
OFCI	OWNER FURNISHED, CONTRACTOR INSTALLED
OFOI	OWNER FURNISHED, OWNER INSTALLED
PNL	PANEL
PH	PHASE
PVC	POLY-VINYL-CHLORIDE
PWR	POWER
QTY	QUANTITY
REF	REFERENCE
(R)	RELOCATE
RFI	REQUEST FOR INFORMATION
REQD	REQUIRED
RMC	RIGID METAL CONDUIT
RM	ROOM
SHT	SHEET
SM	SIMILAR
SPKR	SPEAKER
STD	STANDARD
SPD	SURGE PROTECTION DEVICE
SWBD	SWITCHBOARD
TBB	TELECOMMUNICATIONS BONDING BACKBONE
TGB	TELECOMMUNICATIONS GROUNDING BUS BAR
TTB	TELEPHONE TERMINAL BOARD
TBD	TO BE DETERMINED
XTMR	TRANSFORMER
TVSS	TRANSIENT VOLTAGE SURGE SUPPRESSOR
TP	TRANSITION POINT
TYP	TYPICAL
UG	UNDERGROUND
UL	UNDERWRITERS LABORATORIES
UPS	UNINTERRUPTIBLE POWER SUPPLY
UON	UNLESS OTHERWISE NOTED
VFD	VARIABLE FREQUENCY DRIVE
VERIFY	VERIFY
V	VOLTS, VOLTAGE
WP	WEATHERPROOF
WG	WIRE GUARD
W	WIRE, WHITE
WI	WITH
W/O	WITHOUT
WAO	WORK AREA OUTLET

Connections / Equipment

	COMBINATION ADJUSTABLE FREQUENCY DRIVE WITH SAFETY DISCONNECT SWITCH
	COMBINATION MOTOR STARTER/FUSED DISCONNECT SWITCH
	HEAVY DUTY FUSED DISCONNECT SWITCH
	MOTOR CONNECTION
	NON-FUSED DISCONNECT SWITCH
	CEILING MOUNTED JUNCTION BOX
	FLOOR MOUNTED JUNCTION BOX
	WALL-MOUNTED JUNCTION BOX
<b>General</b>	
	DETAIL NUMBER AND SHEET LOCATION
	EQUIPMENT IDENTIFICATION
	FOOD SERVICE EQUIPMENT / CALCULATION TAG
	KEYED NOTE
	SECTION NUMBER AND SHEET LOCATION
	DEMOLISH
	EXISTING WORK
	NEW WORK

Lighting

	EMERGENCY LUMINAIRE WITH BATTERY PACK
	EXIT SIGN CEILING MOUNTED, ARROW(S) INDICATES DIRECTION IF SHOWN
	EXIT SIGN WALL MOUNTED, ARROW(S) INDICATES DIRECTION IF SHOWN
	RECESSED 2' X 4' LUMINAIRE
	WALL MOUNTED LUMINAIRE

Miscellaneous

	BRANCH CIRCUIT WIRING: ARROW INDICATES HOME RUN TO PANEL WITH CIRCUITS AS NOTED. WIRE SIZE IS #12 AWG MINIMUM UNLESS NOTED OTHERWISE. SHORT TICK MARKS INDICATE PHASE CONDUCTORS. LONG TICK MARKS INDICATE NEUTRAL CONDUCTORS. A SINGLE CURVED TICK MARK INDICATES INSULATED GREEN GROUND CONDUCTOR. SECOND CURVED TICK MARK INDICATES "ISOLATED GROUND" (GREEN INSULATION WITH YELLOW STRIPE) CONDUCTOR.
	BRANCH PANEL
	CIRCUIT BREAKER
	DRY TYPE TRANSFORMER
	FLUSH MOUNT EQUIPMENT ENCLOSURE AS NOTED
	FLUSH WALL MOUNTED BRANCH PANEL
	GROUND BAR
	GROUNDING POINT
	MAIN DISTRIBUTION PANEL / SUB DISTRIBUTION PANEL
	POWER UTILITY POLE
	SUBGRADE VAULT CATV
	SUBGRADE VAULT POWER
	SUBGRADE VAULT TELEPHONE
	SURFACE MOUNT EQUIPMENT ENCLOSURE AS NOTED
	TELEPHONE UTILITY POLE
	UTILITY TRANSFORMER PAD/VAULT

Raceways

	EXISTING CONDUIT CONCEALED IN WALL OR CEILING SPACE
	EXISTING CONDUIT ROUTED BELOW FLOOR / GRADE
	OVERHEAD PRIMARY SERVICE
	OVERHEAD TELEPHONE SERVICE
	UNDERGROUND CABLE TELEVISION SERVICE
	UNDERGROUND PRIMARY SERVICE
	UNDERGROUND SECONDARY SERVICE
	UNDERGROUND TELEPHONE SERVICE
	CONDUIT CONCEALED IN WALL OR CEILING SPACE
	CONDUIT ROUTED BELOW FLOOR / GRADE
	CONDUIT ELLED DOWN
	CONDUIT ELLED UP
	CONDUIT/WIRING CONTINUATION
	CONDUIT/WIRING STUBBED OUT WITH END CAP OR INSULATED PLASTIC BUSHING
	FLEXIBLE CONDUIT

Switches and Receptacles

	DUPLEX RECEPTACLE (MULTIPLE LETTERS INDICATE MULTIPLE OPTIONS) A = ABOVE COUNTER C = FLUSH CEILING MOUNTED F = ARC FAULT PROTECTED BY BREAKER IN PANEL G = GROUND FAULT CIRCUIT INTERRUPTER P = PENDANT MOUNTED WITH CORD GRIPS. VERIFY PENDANT LENGTH T = TAMPER RESISTANT SHUTTERED RECEPTACLE W = WEATHERPROOF CONTINUOUS USE COVER, GFCI PROTECTED, WITH WEATHER-RESISTANT RECEPTACLE
	DOUBLE DUPLEX RECEPTACLE. SEE LETTER CODE LIST AT DUPLEX RECEPTACLE FOR OPTIONS
	SINGLE RECEPTACLE. SEE LETTER CODE LIST AT DUPLEX RECEPTACLE FOR OPTIONS
	EQUIPMENT ELECTRICAL CONNECTION
	SPECIAL PURPOSE RECEPTACLE. LETTER CODE DENOTES RECEPTACLE CONFIGURATION LX-XXR = NEMA CONFIGURATION TWIST-LOCK RECEPTACLE X-XXR = NEMA CONFIGURATION STRAIGHT BLADE RECEPTACLE P = PENDANT MOUNT WITH CORD GRIPS. VERIFY PENDANT LENGTH X = COORDINATE RECEPTACLE CONFIGURATION WITH EQUIPMENT BEING SUPPLIED
	PENDANT RECEPTACLE WITH CORD GRIPS. VERIFY PENDANT LENGTH. SEE LETTER CODE LIST AT DUPLEX RECEPTACLE FOR OPTIONS
	SINGLE POLE SWITCH 2 = DOUBLE POLE SWITCH 3 = THREE-WAY SWITCH a THRU z (LOWERCASE) = LUMINAIRE CONTROL DESIGNATION L = LIGHTED HANDLE M = MANUAL MOTOR STARTER WITH THERMAL OVERLOAD P = SWITCH WITH PILOT LIGHT W = WEATHERPROOF SWITCH

GENERAL ELECTRICAL NOTES

- A. CONSULT ALL DRAWINGS AND SPECIFICATIONS IN THIS PROJECT AND BECOME FAMILIAR WITH ALL EQUIPMENT TO BE INSTALLED. COORDINATE ALL ASPECTS OF THE CONTRUCTION WITH THE OTHER TRADES ON THE JOB TO ENSURE THAT ALL WORK AND MATERIALS REQUIRED PROVIDE A COMPLETE AND OPERATIONAL FACILITY ARE INCLUDED IN THE BID.

CLIENT

Beaverton School District



16550 SW Merlo Rd. OR 97003

COPYRIGHT

This drawing has been prepared solely for the intended use. No other reproduction or distribution for any purpose other than authorized by IB Group is forbidden. No other person shall be permitted to use, copy, or reproduce this drawing. All drawings shall verify and be responsible for all dimensions and conditions on the job, and IB Group shall be relieved of any liabilities from the dimensions and conditions shown on the drawing. Shop drawings shall be submitted to IB Group for general confirmation before proceeding with fabrication.

PLEASE CHOOSE LEGAL ENTITY  
is a member of the IB Group of companies

ISSUES

No.	DESCRIPTION	DATE
1	BID DOCUMENTS	06-06-2022

CONSULTANTS



PROJECT: 2022-0529  
CONTACT: KRISTINE LEAVENS  
100 SW Main Street, Suite 1600  
Portland, OR 97204  
TEL 503.362.2266  
www.interfaceengineering.com

SHEET INDEX

E0.1	SYMBOL LIST AND GENERAL NOTES - ELECTRICAL
E02.1	DEMO FLOOR PLAN - ELECTRICAL
E2.1	FLOOR PLAN - ELECTRICAL
E6.1	SCHEDULES - ELECTRICAL

SEAL



SELECT CONSULTANT TYPE

	IBI GROUP 907 SW Harvey Milk Street Portland, OR 97205, USA tel 503 226 6950 fax 503 273 9192 ibigroup-espinw.com
--	---

PROJECT  
BSD Southridge HS Freezer Replacement  
16550 SW Merlo Rd. OR 97003

PROJECT NO.

Project Number

DRAWN BY: KCL	CHECKED BY: MKO
PROJECT MGR: KCL	APPROVED BY: MKO

SHEET TITLE  
SYMBOL LIST AND GENERAL NOTES - ELECTRICAL

SHEET NUMBER

E0.1

ISSUE

1



SHEET KEYNOTES

1. BID ALTERNATE TO RELOCATE PENDANT RECEPTACLE FOR HEATED CABINET. (ALTERNATE #1)

CLIENT  
Beaverton School District  
**BEAVERTON**  
SCHOOL DISTRICT  
16550 SW Merlo Rd. OR 97003

**COPYRIGHT**  
This drawing has been prepared solely for the intended use. No reproduction or distribution for any purpose other than authorized by BE Group is permitted. Any reproduction or distribution without the written consent of BE Group is prohibited. BE Group shall be indemnified of any violations from the drawings and conditions shown on the drawing. Shop drawings shall be submitted to BE Group for general confirmation before proceeding with fabrication.

**PLEASE CHOOSE LEGAL ENTITY**  
is a member of the BE Group of companies

ISSUES		
No.	DESCRIPTION	DATE
1	BID DOCUMENTS	06-06-2022

CONSULTANTS

**INTERFACE**  
ENGINEERING  
PROJECT: 2022-0525  
CONTACT: KRISTINE LEAVENS  
100 SW Main Street, Suite 1600  
Portland, OR 97204  
TEL 503.392.2266  
www.interfaceengineering.com

SEAL



SELECT CONSULTANT TYPE

**BI GROUP**  
907 SW Harvey Milk Street  
Portland, OR 97205, USA  
tel 503 226 6950 fax 503 273 9192  
bigroup@spinn.com

PROJECT  
BSD Southridge HS Freezer Replacement  
16550 SW Merlo Rd. OR 97003

PROJECT NO.  
Project Number

DRAWN BY:  
KCL

CHECKED BY:  
JMM

PROJECT MGR:  
KCL

APPROVED BY:  
MKO

SHEET TITLE

DEMO FLOOR PLAN - ELECTRICAL

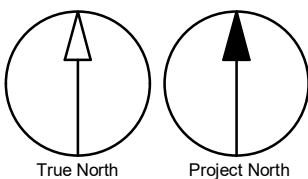
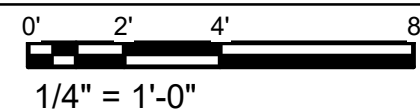
SHEET NUMBER

ED2.1

ISSUE

1

1 DEMO FLOOR PLAN - ELECTRICAL



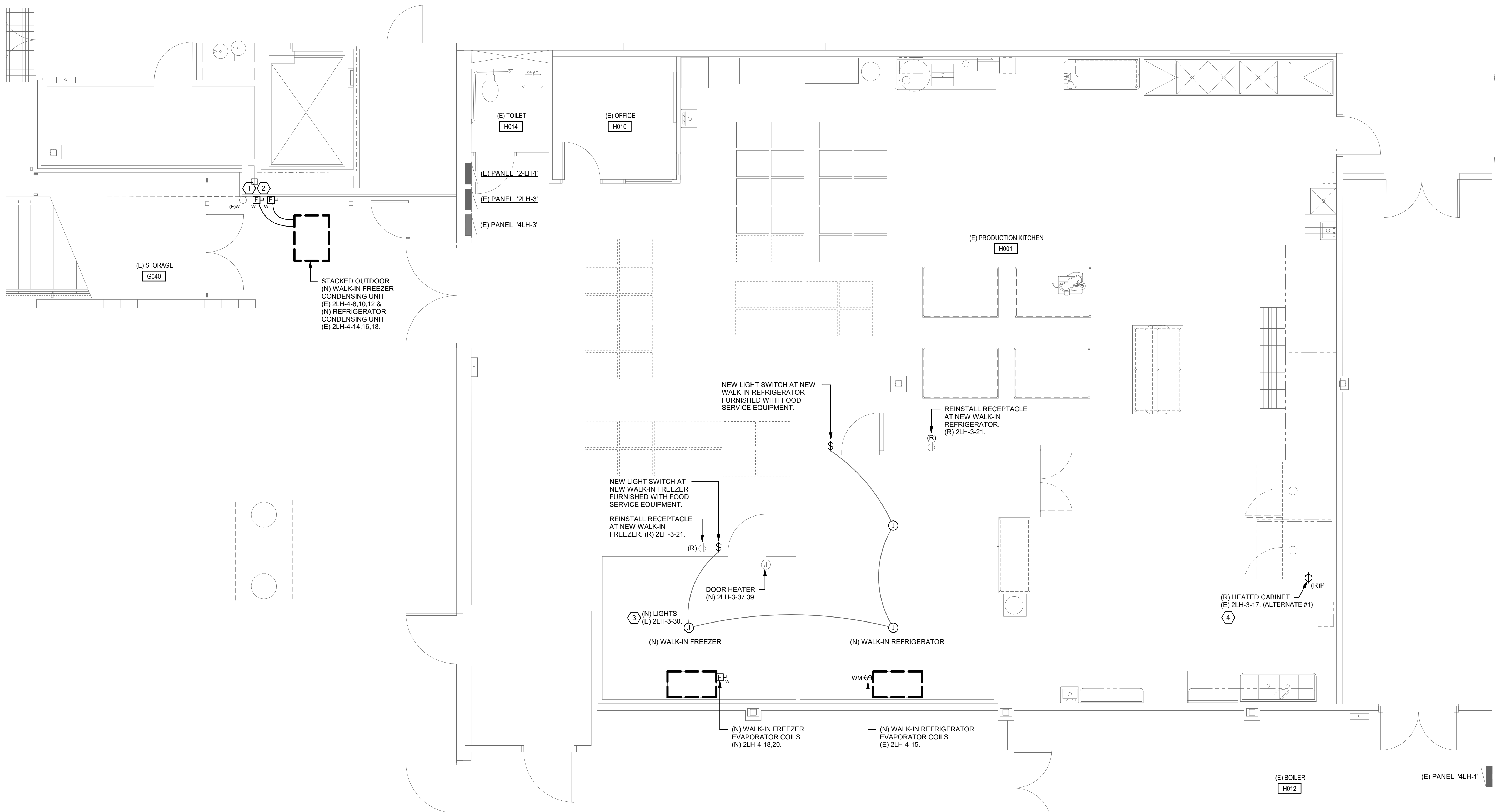


GENERAL ELECTRICAL NOTES

A. ROUTE ALL RACEWAY SERVING NEW WALK-IN FREEZER AND COOLER ALONG OUTSIDE OF UNITS AND STUB-IN ONLY AT EQUIPMENT CONNECTION LOCATIONS. SEAL ALL PENETRATIONS PER MANUFACTURER REQUIREMENTS.

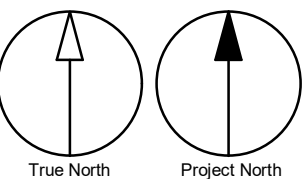
SHEET KEYNOTES

- UTILIZE EXISTING WIRING AND RACEWAY SERVING WALK-IN FREEZER CONDENSING UNIT FROM CIRCUIT 2LH-4-8, 10, 12 TO SERVE NEW CONDENSING UNIT.
- UTILIZE EXISTING WIRING AND RACEWAY SERVING WALK-IN REFRIGERATOR CONDENSING UNIT FROM CIRCUIT 2LH-4-14, 16, 18 TO SERVE NEW CONDENSING UNIT.
- UTILIZE EXISTING WIRING AND RACEWAY SERVING WALK-IN FREEZER / WALK-IN REFRIGERATOR LIGHTING FROM CIRCUIT 2LH-3-30 TO SERVE NEW LIGHTING.
- BID ALTERNATE TO RELOCATE PENDANT RECEPTACLE FOR HEATED CABINET. (ALTERNATE #1)



1 FLOOR PLAN - POWER

0 2' 4' 8'  
1/4" = 1'-0"



CLIENT

Beaverton School District



BEAVERTON  
SCHOOL DISTRICT

16550 SW Merlo Rd. OR 97003

COPYRIGHT

This drawing has been prepared solely for the intended use. No other reproduction or distribution for any purpose other than authorized by BE Group is permitted. Any other use without the written consent of BE Group is prohibited. Contractors shall verify and be responsible for all dimensions and conditions on the job, and BE Group shall be relieved of any liability from the dimensions and conditions shown on the drawing. Shop drawings shall be submitted to BE Group for general confirmation before proceeding with fabrication.

PLEASE CHOOSE LEGAL ENTITY

is a member of the BE Group of companies

ISSUES

No.	DESCRIPTION	DATE
1	BID DOCUMENTS	06-06-2022

CONSULTANTS



INTERFACE  
ENGINEERING

PROJECT: 2022-0525  
CONTACT: KRISTINE LEAVENS  
100 SW Main Street, Suite 1600  
Portland, OR 97204  
TEL 503.362.2266  
www.interfaceengineering.com

SEAL



SELECT CONSULTANT TYPE



IBI GROUP  
907 SW Harvey Milk Street  
Portland, OR 97205, USA  
tel 503 226 6950 fax 503 273 9192  
ibigroup-espinw.com

PROJECT

BSD Southridge HS Freezer Replacement

16550 SW Merlo Rd. OR 97003

PROJECT NO.

Project Number

DRAWN BY:

KCL

CHECKED BY:

MKO

PROJECT MGR:

KCL

APPROVED BY:

MKO

SHEET TITLE

FLOOR PLAN - ELECTRICAL

SHEET NUMBER

E2.1

ISSUE

1



(E/X) Panel '2LH-3'												2022-0525
120/208V, 3 Ph., 4 W.; 250A Bus with Main Lug Only Flush Mounted Panelboard												
Ckt. No.	Description / Location	Load (VA)	Type	C.B. A/Pole	Note	Ph.	Note	C.B. A/Pole	Load (VA)	Type	Description / Location	Ckt. No.
1	(E) BOOSTER, HEATER			20/1		A		20/2			(E) ICE STATION	2
3	(E) STEAM KETTLE			20/3		B						4
5	---			-		C		20/2			(E) ICE STATION	6
7	---			-		A		-				8
9	(E) COMBI CONV. OVENS			20/3		B		15/3			(E) MIXER	10
11	---			-		C		-				12
13	---			-		A		-				14
15	(E) HEATED CABINETS			20/1		B		20/1			(E) SLICER	16
17	(E) HEATED CABINETS			20/1		C		20/1			(E) HEATED CABINETS	18
19	(E) HEATED CABINETS			20/1		A		20/1			(E) HEATED CABINETS	20
21	(E) RECP - PROD. KITCHEN			20/1		B		20/1			(E) HEATED CABINETS	22
23	(X) WALK-IN DOOR HEATER			20/1		C		20/1			(E) HEATED CABINETS	24
25	(E) RECP - PROD. KITCHEN			20/1		A		20/1			(E) HEATED CABINETS	26
27	(E) RECP - PROD. KITCHEN			20/1		B		20/1			(E) HEATED CABINETS	28
29	(E) LTS - HOOD LIGHTS			20/1		C		20/1			(X) LTS - WALK-IN FREEZER/FRIDGE	30
31	(E) RECP - FIRE SUPPRESSION			20/1		A		20/1			(E) WASHER	32
33	(E) RACK OVENS			20/1		B		20/1			(E) SPARE	34
35	(E) RACK OVENS			20/1		C		30/2			(E) DRYER	36
37	(X) BUSSED SPACE					A		-			---	38
39	(E) BUSSED SPACE					B					(E) BUSSED SPACE	40
41	(E) BUSSED SPACE					C					(E) BUSSED SPACE	42
Total Connected Load:				Ph. A	0 VA	0 Amps		Panel Connected Load:	0.0 KVA	0.0 Amps		
Total Connected Load:				Ph. B	0 VA	0 Amps		Sub-Fed Connected Load:	0.0 KVA	0.0 Amps		
Total Connected Load:				Ph. C	0 VA	0 Amps		Total Demand Load:	0.0 KVA	0.0 Amps		

(E/X) Panel '2LH-4'												2022-0525
120/208V, 3 Ph., 4 W.; 250A Bus with Main Lug Only Flush Mounted Panelboard												
Ckt. No.	Description / Location	Load (VA)	Type	C.B. A/Pole	Note	Ph.	Note	C.B. A/Pole	Load (VA)	Type	Description / Location	Ckt. No.
1	(E) CIRC. PUMP			20/1		A		40/3			(X) REFRIGERATOR COMP/COND	2
3	(E) RECEPTACLES			20/1		B		-			---	4
5	(E) REC-SHOP			20/1		C		-			---	6
7	(X) BLAST CHILLER			20/1		A		40/3			(X) FREEZER COMP/COND	8
9	(X) BLAST CHILLER REMOTE			20/3		B		-			---	10
11	---			-		C		-			---	12
13	---			-		A		30/2			(E) PROOFER	14
15	(X) WALK-IN COIL FANS			20/1		B		-			---	16
17	(E) SP-1			20/1		C		-			(E) BUSSED SPACE	18
19	(E) EWC-1, (E) EF-15, (E) CUH-GL-1			20/1		A					(E) BUSSED SPACE	20
21	(E) EF-28			20/1		B					(E) BUSSED SPACE	22
23	(E) EF-32 (BOOSTER FAN)			20/1		C					(E) BUSSED SPACE	24
25	(E) EF-34			20/1		A					(E) BUSSED SPACE	26
27	(E) EF-33			20/1		B					(E) BUSSED SPACE	28
29	(E) EF-23			20/1		C					(E) BUSSED SPACE	30
31	(E) RECEPTACLE - POS			20/1		A					(E) BUSSED SPACE	32
33	(E) IN-USE CIRCUIT			20/1		B					(E) BUSSED SPACE	34
35	(E) BUSSED SPACE					C					(E) BUSSED SPACE	36
37	(E) BUSSED SPACE					A					(E) BUSSED SPACE	38
39	(E) BUSSED SPACE					B					(E) BUSSED SPACE	40
41	(E) BUSSED SPACE					C					(E) BUSSED SPACE	42
Total Connected Load:				Ph. A	0 VA	0 Amps		Panel Connected Load:	0.0 KVA	0.0 Amps		
Total Connected Load:				Ph. B	0 VA	0 Amps		Sub-Fed Connected Load:	0.0 KVA	0.0 Amps		
Total Connected Load:				Ph. C	0 VA	0 Amps		Total Demand Load:	0.0 KVA	0.0 Amps		

(E/N) Panel '2LH-3'												2022-0525
120/208V, 3 Ph., 4 W.; 250A Bus with Main Lug Only Flush Mounted Panelboard												
Ckt. No.	Description / Location	Load (VA)	Type	C.B. A/Pole	Note	Ph.	Note	C.B. A/Pole	Load (VA)	Type	Description / Location	Ckt. No.
1	(E) BOOSTER, HEATER			20/1		A		20/2			(E) ICE STATION	2
3	(E) STEAM KETTLE			20/3		B						4
5	---			-		C		20/2			(E) ICE STATION	6
7	---			-		A		-				8
9	(E) COMBI CONV. OVENS			20/3		B		15/3			(E) MIXER	10
11	---			-		C		-			---	12
13	---			-		A		-			---	14
15	(E) HEATED CABINETS			20/1		B		20/1			(E) SLICER	16
17	(E) HEATED CABINETS			20/1		C		20/1			(E) HEATED CABINETS	18
19	(E) HEATED CABINETS			20/1		A		20/1			(E) HEATED CABINETS	20
21	(E) RECP - PROD. KITCHEN			20/1		B		20/1			(E) HEATED CABINETS	22
23	(N) SPARE			20/1		C		20/1			(E) HEATED CABINETS	24
25	(E) RECP - PROD. KITCHEN			20/1		A		20/1			(E) HEATED CABINETS	26
27	(E) RECP - PROD. KITCHEN			20/1		B		20/1			(E) HEATED CABINETS	28
29	(E) LTS - HOOD LIGHTS			20/1		C		20/1	300 L		(N) LTS - WALK-IN FREEZER/FRIDGE	30
31	(E) RECP - FIRE SUPPRESSION			20/1		A		20/1			(E) WASHER	32
33	(E) RACK OVENS			20/1		B		20/1			(E) SPARE	34
35	(E) RACK OVENS			20/1		C		30/2			(E) DRYER	36
37	(N) WALK-IN FREEZER DOOR HTR	1,425	H	20/2	1	A		-			---	38
39	---	1,425	H	-		C					(E) BUSSED SPACE	40
41	(E) BUSSED SPACE					C					(E) BUSSED SPACE	42
Total Connected Load:				Ph. A	1,425 VA	12 Amps		Panel Connected Load:	3.2 KVA	8.7 Amps		
Total Connected Load:				Ph. B	1,425 VA	12 Amps		Sub-Fed Connected Load:	0.0 KVA	0.0 Amps		
Total Connected Load:				Ph. C	300 VA	2 Amps		Total Demand Load:	3.2 KVA	9.0 Amps		
Notes:												Accessories:
1. NEW BREAKERS TO MATCH EXISTING MANUFACTURER AND AIC RATING.												

(E/N) Panel '2LH-4'												2022-0525
120/208V, 3 Ph., 4 W.; 250A Bus with Main Lug Only Flush Mounted Panelboard												
Ckt. No.	Description / Location	Load (VA)	Type	C.B. A/Pole	Note	Ph.	Note	C.B. A/Pole	Load (VA)	Type	Description / Location	Ckt. No.
1	(E) CIRC. PUMP			20/1		A	1	20/3	1,190	M	(N) REFRIGERATOR CONDENSING UNIT	2
3	(E) RECEPTACLES			20/1		B		-	1,190	M	---	4
5	(E) REC-SHOP			20/1		C		-	1,190	M	---	6
7	(N) SPARE			20/1		A	1	30/3	2,268	M	(N) FREEZER CONDENSING UNIT	8
9	(N) SPARE			20/3		B		-	2,268	M	---	10
11	---			-		C		-	2,268	M	---	12
13	---			-		A		30/2			(E) PROOFER	14
15	(N) WALK-IN REFRIGERATOR COIL FANS	324	M	20/1		B					---	16
17	(E) SP-1			20/1		C	1	20/2	156	M	(N) WALK-IN FREEZER EVAP. COIL FAN	18
19	(E) EWC-1, (E) EF-15, (E) CUH-GL-1			20/1		A		-	156	M	---	20
21	(E) EF-28			20/1		B					(E) BUSSED SPACE	22
23	(E) EF-32 (BOOSTER FAN)			20/1		C					(E) BUSSED SPACE	24
25	(E) EF-34			20/1		A					(E) BUSSED SPACE	26
27	(E) EF-33			20/1		B					(E) BUSSED SPACE	28
29	(E) EF-23			20/1		C					(E) BUSSED SPACE	30
31	(E) RECEPTACLE - POS			20/1		A					(E) BUSSED SPACE	32
33	(E) IN-USE CIRCUIT			20/1		B					(E) BUSSED SPACE	34
35	(E) BUSSED SPACE					C					(E) BUSSED SPACE	36
37	(E) BUSSED SPACE					A					(E) BUSSED SPACE	38
39	(E) BUSSED SPACE					B					(E) BUSSED SPACE	40
41	(E) BUSSED SPACE					C					(E) BUSSED SPACE	42
Total Connected Load:				Ph. A	3,614 VA	30 Amps		Panel Connected Load:	11.0 KVA	30.6 Amps		
Total Connected Load:				Ph. B	3,782 VA	31 Amps		Sub-Fed Connected Load:	0.0 KVA	0.0 Amps		
Total Connected Load:				Ph. C	3,614 VA	30 Amps		Total Demand Load:	12.7 KVA	35.3 Amps		
Notes:												Accessories:
1. NEW BREAKERS TO MATCH EXISTING MANUFACTURER AND AIC RATING.												

**COPYRIGHT**  
This drawing has been prepared solely for the intended use. No other reproduction or distribution for any purpose other than authorized by IB Group is permitted. Any further use or distribution of any part of this drawing without the written consent of IB Group shall be subject to the provisions of the drawings and conditions shown on the drawing. Shop drawings shall be submitted to IB Group for general confirmation before proceeding with fabrication.  
**PLEASE CHOOSE LEGAL ENTITY**  
is a member of the IB Group of companies

ISSUES		
No.	DESCRIPTION	DATE
1	BID DOCUMENTS	06-06-2022

CONSULTANTS

**INTERFACE**  
ENGINEERING  
PROJECT: 2022-0525  
CONTACT: KRISTINE LEAVENS  
100 SW Main Street, Suite 1600  
Portland, OR 97204  
TEL 503.362.2266  
www.interfaceengineering.com

SEAL



SELECT CONSULTANT TYPE

**IB GROUP**  
907 SW Harvey Milk Street  
Portland, OR 97205, USA  
tel 503 226 6950 fax 503 273 9192  
ibgroup-espnw.com

PROJECT  
BSD Southridge HS Freezer Replacement  
16550 SW Merlo Rd. OR 97003

PROJECT NO. Project Number	
DRAWN BY: KCL	CHECKED BY: MKO
PROJECT MGR: KCL	APPROVED BY: MKO
SHEET TITLE SCHEDULES - ELECTRICAL	

SHEET NUMBER E6.1	ISSUE 1
----------------------	------------